

**COLLECTIONS**  
BOOK 2023





<b>LUXE / LUXE PLUS</b>	15
Solid Colors	16
Fantasy and woodgrain	20
Pearl Effect	41
<b>ZÉNIT / ZÉNIT PLUS</b>	43
Solid Colors Supermatt	44
Fantasy Supermatt	48
MetalDeco	63
Metal Plus	64
<b>SYNCRON</b>	67
Fantasy	68
Woodgrains	76
<b>ENCIMERAS / WORKTOPS</b>	113
Sostenibilidad / Sustainability	116
Producto: especificaciones técnicas Product: technical specifications	118
Ficha técnica / Technical details	121
Directorio de productos Product directory	122



**ALVIC** te invita a descubrir su nueva colección 2023, nuevas propuestas de diseños, acabados y texturas que son el resultado de un cuidadoso trabajo del departamento de diseño e innovación, en el que se da un paso más para la generación de espacios innovadores, funcionales y de diseño.

Nuestros diseños en las familias de tecnología Luxe -lacado alto brillo-, Zénit -lacado supermate- y Sincron -texturizado- están disponibles tanto en paneles como en pieza acabada permitiendo su aplicación en todo tipo de mobiliario y decoración de interior.

---

*ALVIC invites you to discover its new collection 2023, new proposals of designs, finishes and textures that are the result of a careful work of the design and innovation department, in which another step is taken to generate innovative, functional and design spaces.*

*Our designs in the Luxe -high gloss lacquered-, Zénit -supermatt lacquered- and Sincron -texturised- technology families are available both in panels and in finished pieces, allowing their application in all types of furniture and interior decoration.*

---

# Inspírate

Get inspired



Siente la armonía al entrar en este espacio, a través de un perfecto equilibrio entre la nobleza de la madera Picasso 02 y el carácter pétreo del Nuvola 03

*Feel the harmony as you enter this space, through a perfect balance between the nobility of the Picasso 02 wood and the stony character of the Nuvola 03*



Ambiente de cocina en Zénit Nuvola 03 SM, Synchron Blue Fresco Dynamic y Synchron Picasso 02 AR  
Kitchen space in Zénit Nuvola 03 SM, Synchron Blue Fresco Dynamic and Synchron Picasso 02 AR



Baño en Zénit Cotto SM, Zénit Sierra 01 SM y Sincron Raso Dynamic  
Bathroom in Zénit Cotto SM, Zénit Sierra 01 SM and Sincron Raso Dynamic

Inspírate  
Get inspired



Diseña un espacio acogedor y sofisticado combinando los tonos cálidos del Cotto, Raso y Sierra 01

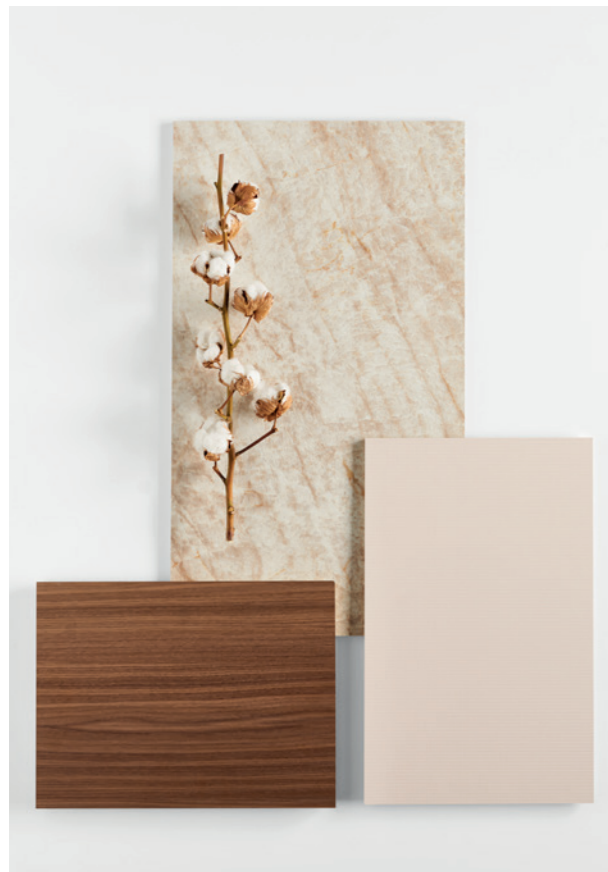
*Design a welcoming and sophisticated space by combining the warm tones of Cotto, Raso and Sierra 01*

# Inspírate

*Get inspired*

Haz de la cocina el corazón del hogar, e integra su estilo en el salón, usando diseños en madera y piedra como el Picasso 02 y el Siena

*Make the kitchen the heart of the home, and blend its style with the living room, by using wood and stone designs like Picasso 02 and Siena*



Ambiente de cocina en Synchron Raso Avantgarde, Synchron Siena ST y Synchron Picasso 02 AR  
*Kitchen space in Synchron Raso Avantgarde, Synchron Siena ST and Synchron Picasso 02 AR*



Mueble de salón en Sincron Blue Fresco Minerva, Sincron Blanco Polar Minerva y Zénit Azul Marino SM  
 Living room cabinet in Sincron Blue Fresco Minerva, Sincron Blanco Polar Minerva and Zénit Azul Marino SM

## Inspírate

*Get inspired*

Llama la atención creando una estantería contemporánea que se convierta en el epicentro de la estancia, usando maderas en tonos atrevidos

*Make a statement by creating a contemporary bookcase that becomes the epicentre of the room, using bold wood tones from our Minerva Collection*



# Inspírate

*Get inspired*



Crea un espacio que transmita tradición, cercanía y la sensación de hogar, usando la madera de roble de nuestro diseño Velázquez

*Create a space that conveys tradition and the sensation of home, applying the oak wood from our Velázquez design*



Ambiente de cocina en Synchron Paros Dynamic, Synchron Velázquez 01 AR y Zénit Camel SM  
*Kitchen space in Synchron Paros Dynamic, Synchron Velázquez 01 AR and Zénit Camel SM*





Showroom "Hermosilla 77", Madrid

Luxe<sup>®</sup>  
by ALVIC  
PATENTED PRODUCT



Superficie MDF lacada en  
alto brillo, efecto espejo

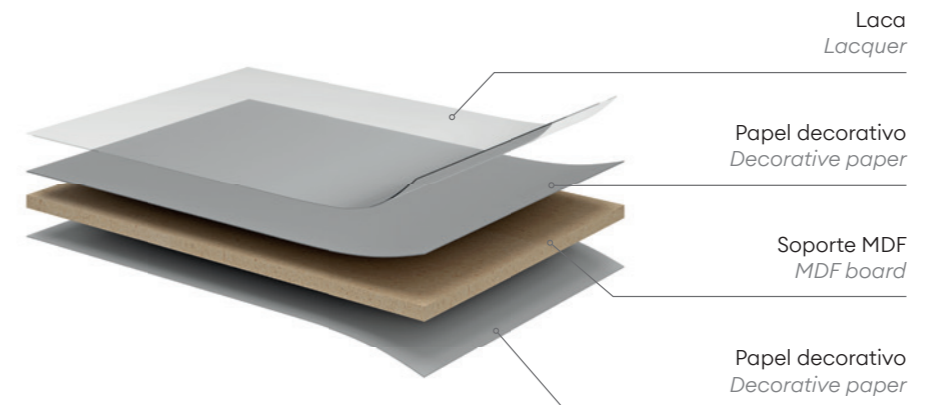
*High gloss, mirror effect  
lacquered MDF surface*

Luxe es una superficie compuesta de soporte de MDF de calidad, sobre el cual se prensa el papel decorativo impregnado con resinas y aditivos y cuya fórmula única desarrollada por ALVIC proporciona el mejor acabado. Finalmente, una capa de lacado con tratamiento UV en su cara frontal aporta dureza y calidad superficial al producto.

*Luxe is a surface composed of quality MDF board, on which is pressed the decorative paper impregnated with resins and additives and whose unique formula developed by ALVIC provides the best finish. Finally, a layer of lacquer with UV treatment on the front side gives hardness and surface quality to the product.*

Un acabado en alto brillo, con efecto espejo y una alta resistencia. Su proceso único asegura la estabilidad del color y minimiza las emisiones volátiles a la atmósfera.

*A high gloss finish, with mirror effect and high resistance. Its unique process ensures colour stability and minimises volatile emissions into the atmosphere.*



Alto brillo  
*High gloss*



Alta calidad imagen  
reflejada  
*High-quality mirror  
image*



Estabilidad del color  
*Colour stability*



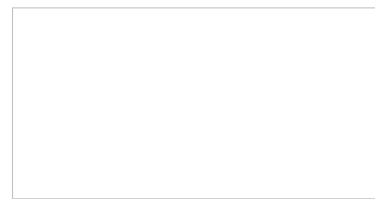
Tratamiento  
antibacteria  
*Antibacterial  
treatment*



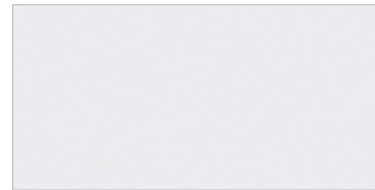
Respetuoso con el  
medio ambiente  
*Environmentally  
friendly*

High Gloss Lacquered Surface

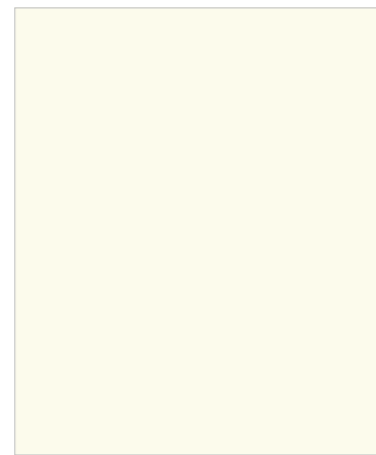
# Solid colors



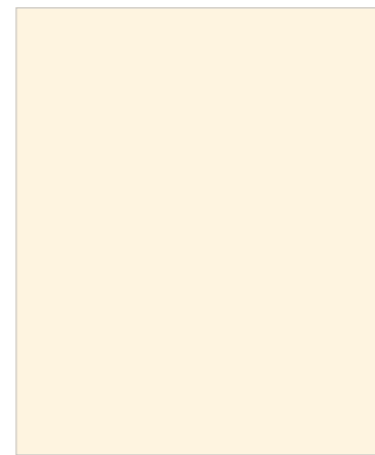
Blanco ●



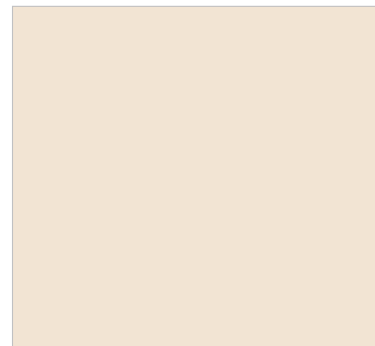
Blanco Polar \* ● ●



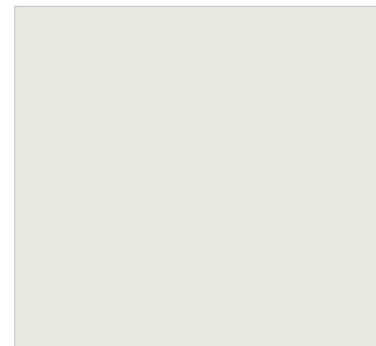
Ivory \*



Magnolia ●



Cameo NEW



Gris Perla



Gris Nube ●



Taupé NEW



Cashmere ●



Gris-2 ●



Negro \* ●



Antracita \* ●



Gris Plomo \* ●

\* LUXE PLUS ● JUST IN TIME LUXE ● JUST IN TIME LUXE PLUS



Ambiente de cocina en Luxe Blanco  
 Kitchen space in Luxe Blanco

# Solid colors



Curry \*



Rojo \* ●



Burdeos \* ●



Basalto \* ●



Cotto ●



Verde Salvia \* ●



Azul Marino \* ●



Agave **NEW**

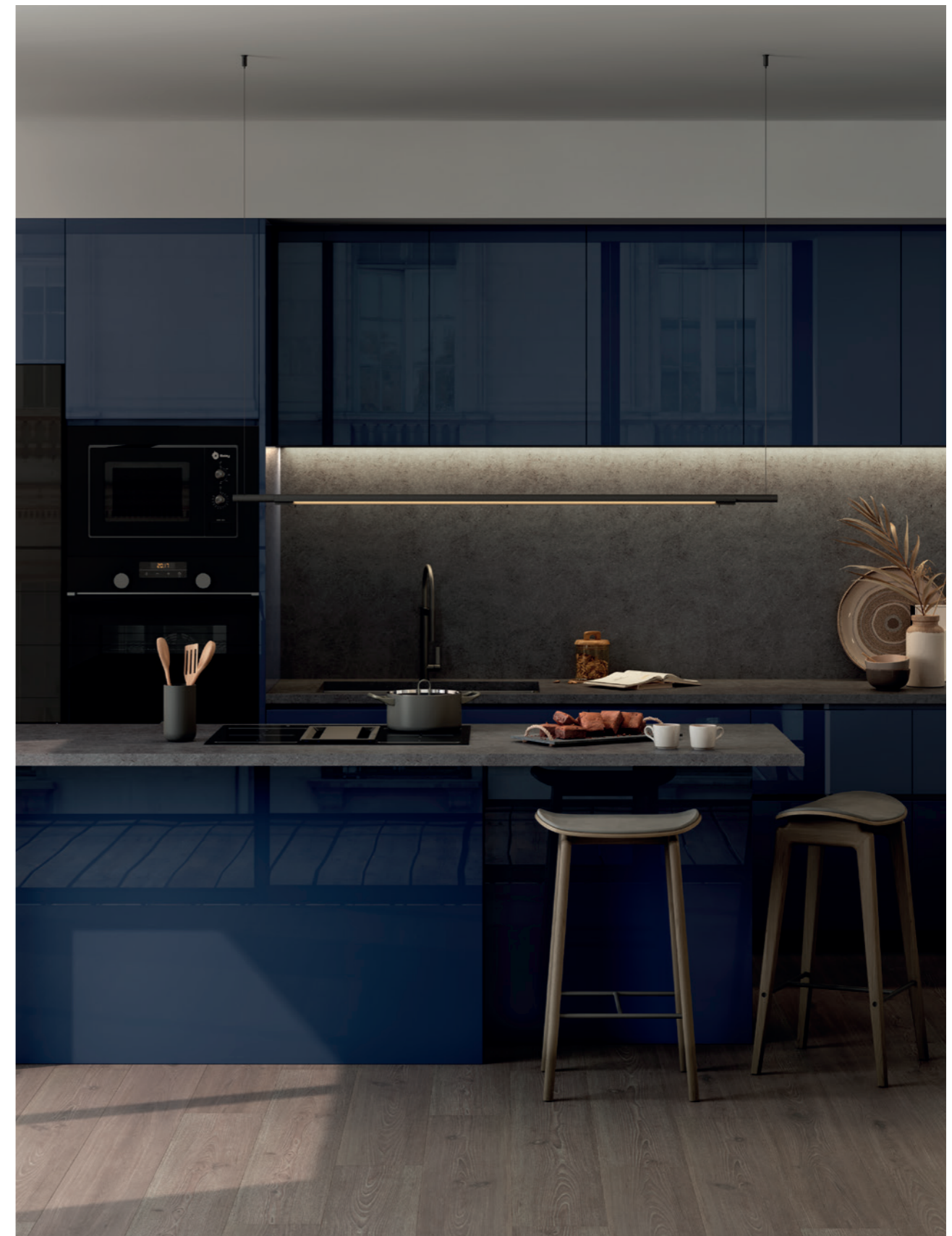


Agua Marina \* ●



Azul Índigo \* ●

\* LUXE PLUS ● JUST IN TIME LUXE ● JUST IN TIME LUXE PLUS



Ambiente de cocina en Luxe Azul Marino  
 Kitchen space in Luxe Azul Marino



Nuvola 01

## Stratos

La elegancia del ónix

*The elegance of onyx*



Nuvola 01

NEW



Nuvola 02

NEW



Nuvola 03

NEW

# Stratos

La delicadeza del mármol

*The delicacy of marble*



Sierra 01

NEW



Sierra 02

NEW



Siena

NEW



Bernini

NEW

# Atempo



Picasso 01

NEW



Picasso 02

NEW



Picasso 03

NEW



Velázquez 03

NEW



Espacio de cocina en Luxe Picasso 03, Zénit Azul Índigo SM y Sincron Vulcano Minerva  
Kitchen space in Luxe Picasso 03, Zénit Indigo Blue SM and Sincron Vulcano Minerva

# Woodgrain

El reflejo de la madera en alto brillo

*The reflection of wood in high gloss*



Nogal Rosales 02 \* ●



Nogal Rosales 03 \* ●



Olmo

\* LUXE PLUS ● JUST IN TIME LUXE PLUS

# Croma

Una riqueza cromática infinita y sensorial

*An infinite and sensory richness of colours*



Croma Blue ●



Croma Sunset



Croma Peach ●

● JUST IN TIME LUXE

# Titán

El efecto piedra con toque metalizado

*The stone effect with a metallic touch*



Titán 01

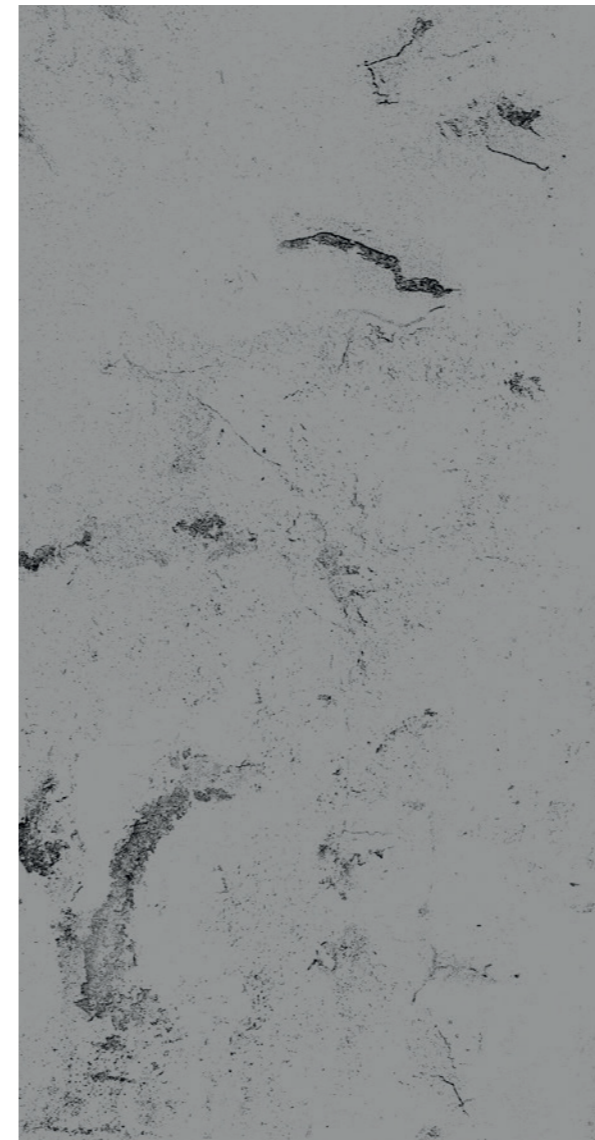
\*



Titán 02

\*

# Osiris



Osiris Plata

\*



Osiris Grafito

\*

\* LUXE PLUS



# Metallo



Metallo 01 Silver

\* ●



Metallo 02 Green

\*



Metallo 03 Brown

\*



Metallo 04 Grafitt

\* ●



Ambiente de cocina con Luxe Metallo 01 Silver diseñado por VIFA  
Kitchen space with Luxe Metallo 01 Silver designed by VIFA

\* LUXE PLUS ● JUST IN TIME LUXE

# Porcelain

La elegancia y la nobleza de la porcelana  
*The elegance and nobility of porcelain*



Porcelain 01 Gold \* ●



Porcelain 02 Gold \*



Porcelain 03 Silver \*

\* LUXE PLUS ● JUST IN TIME LUXE PLUS



Estancia del Hotel Lelystad con Luxe Porcelain 01, diseñado por ME Design & Interior  
*Hotel Lelystad room with Luxe Porcelain 01, designed by ME Design & Interior*

# Cuzco



Cuzco Silver \*



Cuzco Cobre \*



Cuzco Grafitt \*



Cuzco Royal Gold \*



Cuzco Oro \*

\* LUXE PLUS



Cocina en Luxe Cuzco Oro y Zénit Antracita SM  
Kitchen in Luxe Cuzco Oro and Zénit Antracita SM

# Stuco

La estética del efecto estucado en alto brillo

*The aesthetics of the high-gloss coated effect*



Stuco 01 Blanco

\*



Stuco 05 Grafito

\*

\* LUXE PLUS

# Mármol

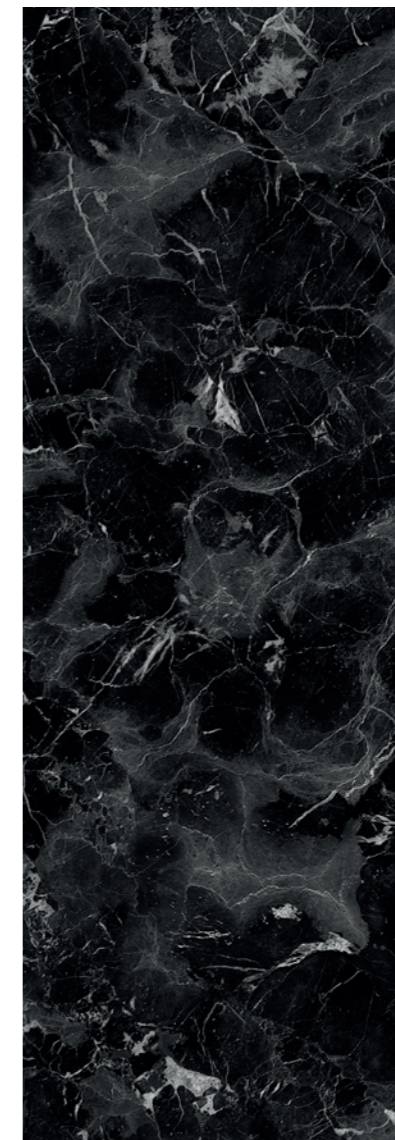
La sofisticación del mármol en blanco y negro

*The sophistication of black and white marble*



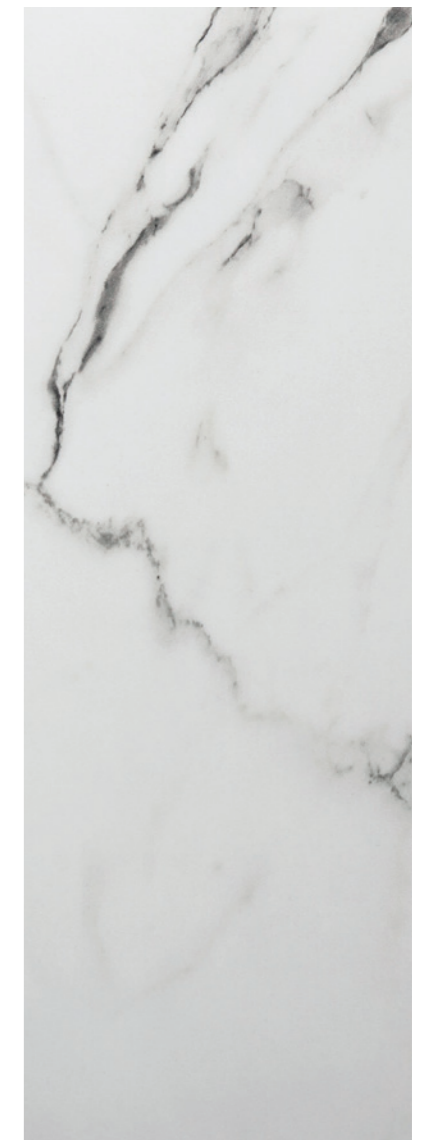
Oriental White

\*



Oriental Black

\*



Mármol Versilia

\*

\* LUXE PLUS

# Steelboard

El efecto acero más vanguardista

*The most avant-garde steel effect*



Steelboard Aluminio \*



Steelboard Copper \*



Steelboard Grafito \*

\* LUXE PLUS



Armario en Luxe Steelboard Aluminio diseñado por VIFA  
*Luxe Steelboard Aluminio Cabinet designed by VIFA*

## Textil / Mélange



Textil Oro \*



Textil Grafito \*



Textil Plata \*



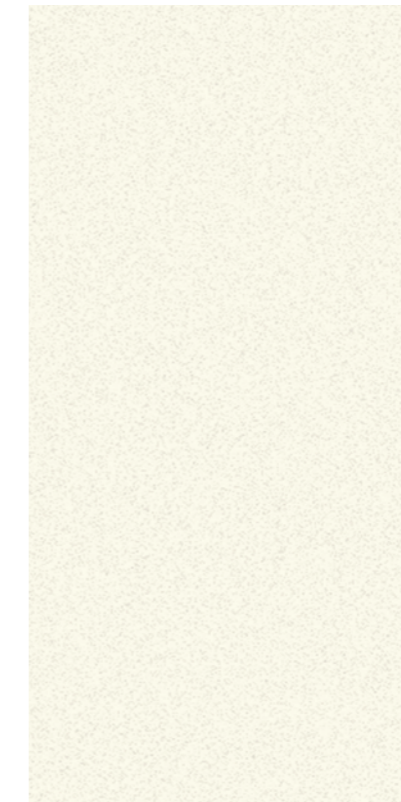
Mélange 01 Ocre \*

\* LUXE PLUS

## Pearl Effect



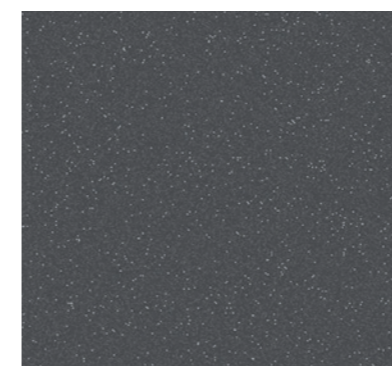
Blanco Colonial Pearl



Marfil Pearl



Basalto Pearl



Gris Plomo Pearl



Burdeos Pearl



Antracita Pearl



Negro Pearl



Espacio Alvic en Casa Decor 2022, diseñado por Héctor Ruiz-Velázquez  
*Alvic Space at Casa Decor 2022, designed by Héctor Ruiz-Velázquez*



Superficie lacada en acabado supermate de tacto sedoso y alta resistencia

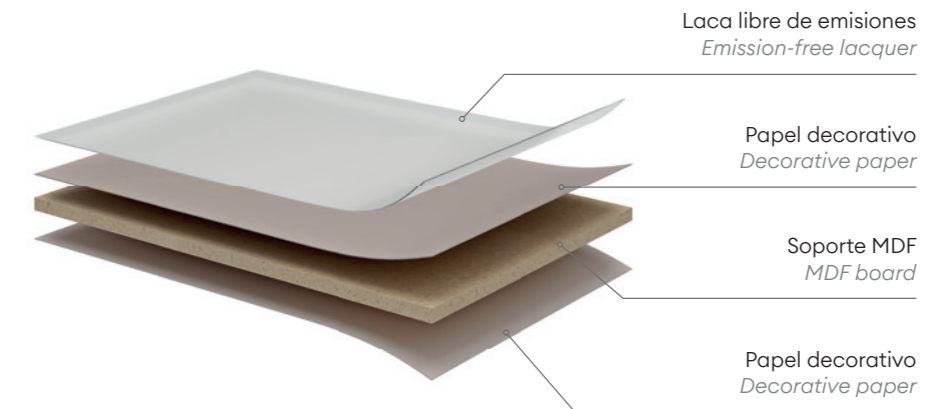
*Supermatt lacquered surface with silky touch and high resistance*

Zénit es una superficie compuesta de un soporte MDF de calidad, sobre el cual se prensa el papel decorativo impregnado con resinas y aditivos, cuya fórmula única desarrollada por ALVIC proporciona el mejor acabado.

*Zénit is a surface composed of a quality MDF board, on which is pressed the decorative paper impregnated with resins and additives, whose unique formula developed by ALVIC provides the best finish.*

Finalmente, se aplica una capa de lacado mate con tratamiento UV en su cara frontal que aporta una alta resistencia y propiedades físico-mecánicas que la convierten en una superficie única y respetuosa con el medio ambiente. Su proceso de lacado es 100% ecológico, que hace que no se emitan compuestos orgánicos volátiles a la atmósfera. Zénit es antihuellas y altamente resistente al rayado y la abrasión.

*Finally, a matt lacquer layer with UV treatment is applied on its front side, which provides high resistance and physical-mechanical properties that make it a unique and environmentally friendly surface. Its lacquering process is 100% ecological, which means that no volatile organic compounds are emitted into the atmosphere. Zénit is anti-fingerprint and highly resistant to scratches and abrasion.*



Tacto Seda  
*Silk touch*



Anti-huellas  
*Anti-fingerprints*



Baja reflexión de la luz  
*Low reflection of light*

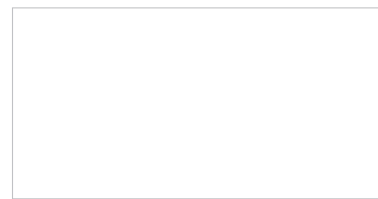


Alta resistencia a la abrasión  
*High abrasion resistance*

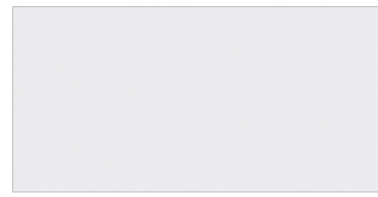


Respetuoso con el medio ambiente  
*Environmentally friendly*

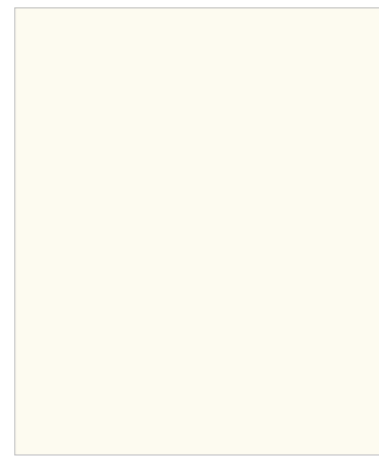
# Solid colors



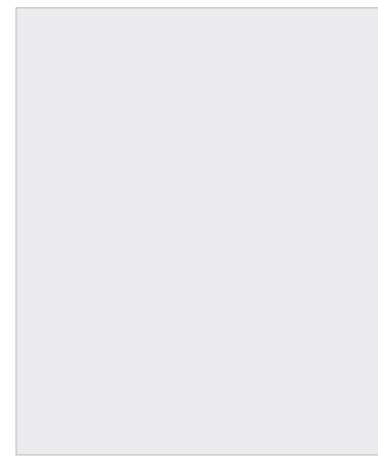
Blanco SM \* ●



Blanco Polar SM \* ●



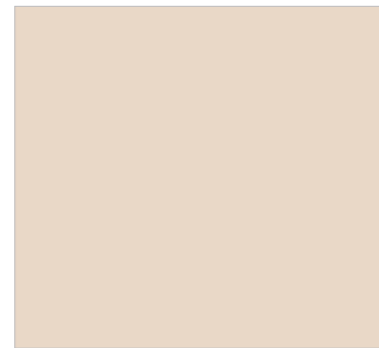
Magnolia SM \* ●



Gris Perla SM \*



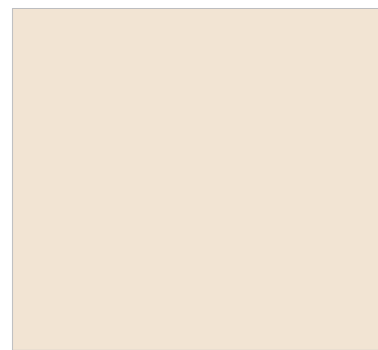
Gris Nube SM \* ●



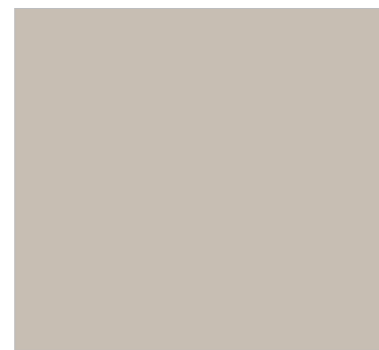
Arena SM ●



Taupé SM **NEW**



Cameo SM **NEW**



Cashmere SM \* ●



Ginger SM ●



Camel SM ●



Curry SM \*



Tortora SM ●

\* ZÉNIT PLUS ● JUST IN TIME  
(No disponible para Zénit Plus / Not available for Zénit Plus)



Cocina con isla en Zénit Arena SM  
Kitchen with island in Zénit Arena SM



# Solid colors



Ambiente de cocina en Zénit Cotto SM. Diseñado por Carlo Casagrande & Co Oy  
Kitchen space in Zénit Cotto SM. Designed by Carlo Casagrande & Co Oy



\* ZÉNIT PLUS ● JUST IN TIME  
(No disponible para Zénit Plus / Not available for Zénit Plus)



Nuvola 03 SM

## Stratos

Zénit by ALNIC  
High Resistance Surface

La elegancia del ónix

*The elegance of onyx*



Nuvola 01 SM

● NEW



Nuvola 02 SM

● NEW



Nuvola 03 SM

● NEW

● JUST IN TIME

(No disponible para Zénit Plus / Not available for Zénit Plus)

# Stratos

La armonía y naturalidad del carácter pétreo

*Harmony and naturalness of the stone character*



Sierra 01 SM

NEW



Sierra 02 SM

NEW



Sienna SM

NEW



Bernini SM

NEW

# Atempo

Celebra la belleza de la naturaleza

*Celebrate the beauty of nature*

Maderas atemporales que emulan la delicadeza del roble natural

*Timeless woods that emulate the finesse of natural oak*



Picasso 01 SM ● NEW



Picasso 02 SM ● NEW



Picasso 03 SM NEW



Velázquez 01 SM NEW



Velázquez 02 SM NEW



Velázquez 03 SM NEW

● JUST IN TIME  
(No disponible para Zénit Plus / Not available for Zénit Plus)

# Croma



Cocina en Zénit Croma Blue SM  
Kitchen in Zénit Croma Blue SM

Inspirada en la riqueza cromática de la naturaleza  
*Inspired by the chromatic richness of nature*



Croma Blue SM



Croma Sunset SM



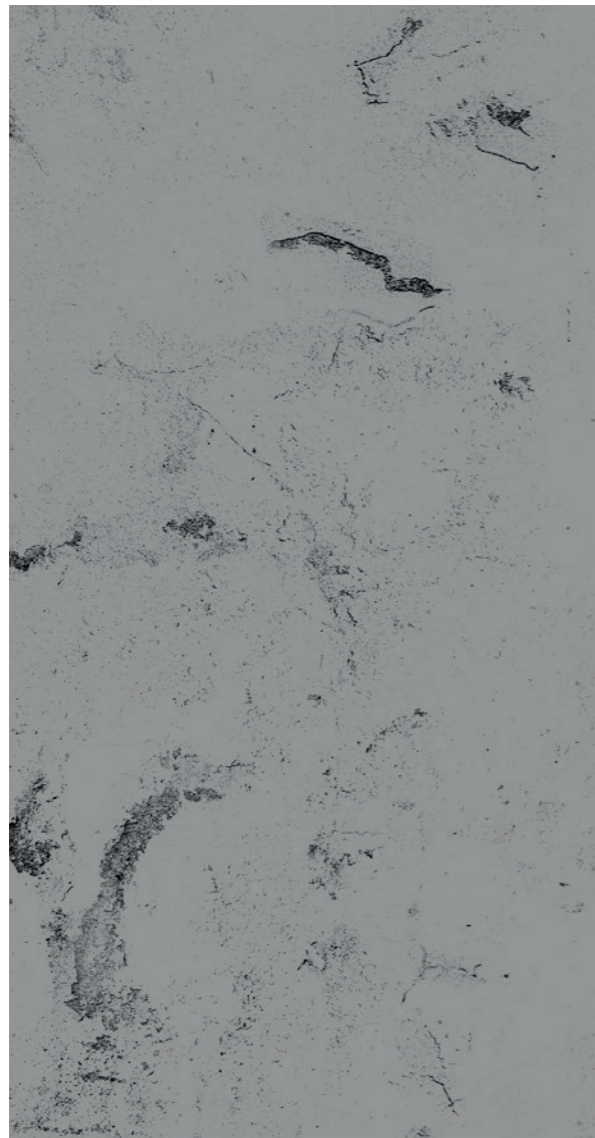
Croma Peach SM

● JUST IN TIME  
(No disponible para Zénit Plus / Not available for Zénit Plus)

# Osiris

Aporta un efecto metálico que ofrece multitud de posibilidades en el diseño

*It provides a metallic effect that offers a multitude of design possibilities*



Osiris Plata SM



Osiris Grafito SM



Mueble de baño en Zénit Osiris Plata SM  
Bathroom furniture in Zénit Osiris Plata SM

# Porcelain

La elegancia y sofisticación de la técnica japonesa Kintsugi

*The elegance and sophistication of the Japanese technique Kintsugi*



Porcelain 01 Gold SM \* ●



Porcelain 02 Gold SM \*



Porcelain 03 Silver SM \* ●

\* ZÉNIT PLUS ● JUST IN TIME  
(No disponible para Zénit Plus / Not available for Zénit Plus)

# Titán

El efecto piedra aporta ligereza y versatilidad

*The stone effect adds lightness and versatility*



Titán 01 SM \*



Titán 02 SM \*

\* ZÉNIT PLUS

# Mármol



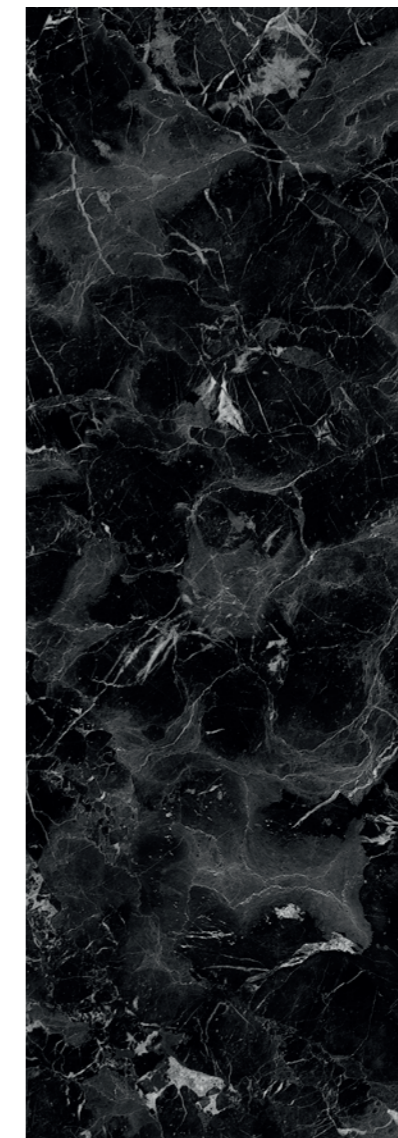
Ambiente de cocina en Zénit Oriental Black y Sincron Anniversary Oak 02  
*Kitchen space in Zénit Oriental Black and Sincron Anniversary Oak 02*

Clásica, elegante y sofisticada

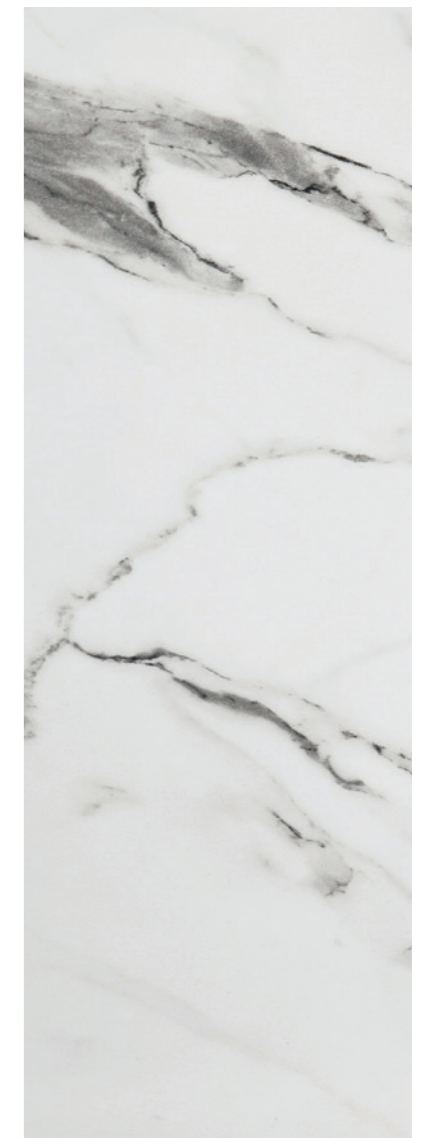
*Classic, elegant and sophisticated*



Oriental White SM \*



Oriental Black SM \*



Mármol Versilia SM \* ●

\* ZÉNIT PLUS ● JUST IN TIME  
(No disponible para Zénit Plus / Not available for Zénit Plus)



# Steelboard

Diseños de toque industrial  
*Designs with an industrial touch*



Steelboard Aluminio SM \* ●



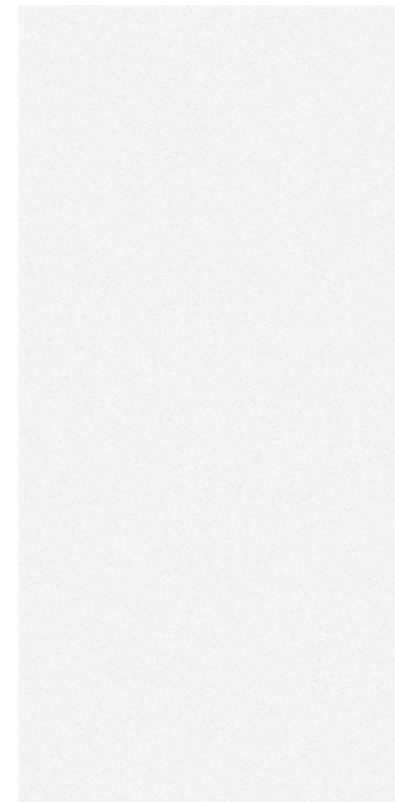
Steelboard Copper SM \* ●



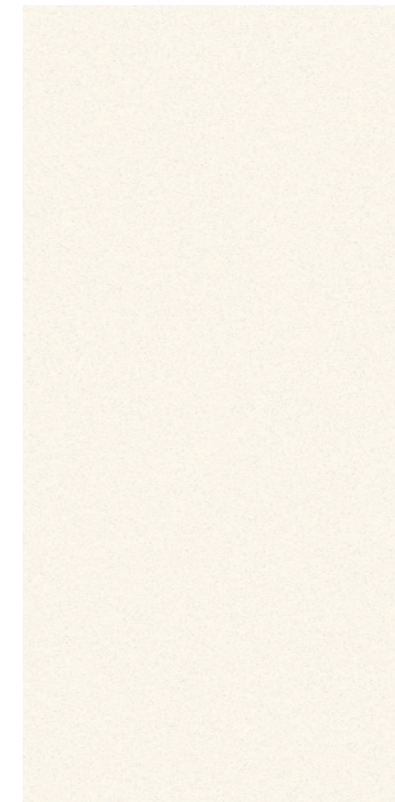
Steelboard Grafito SM \* ●

\* ZÉNIT PLUS ● JUST IN TIME  
 (No disponible para Zénit Plus / Not available for Zénit Plus)

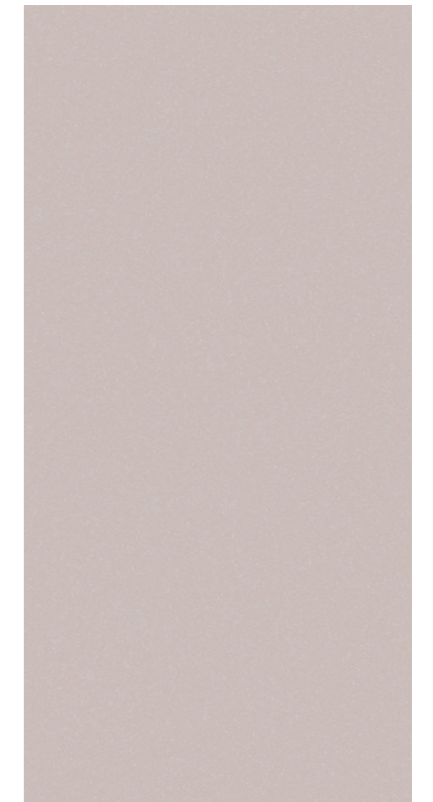
# MetalDeco



Blanco MD



Magnolia MD



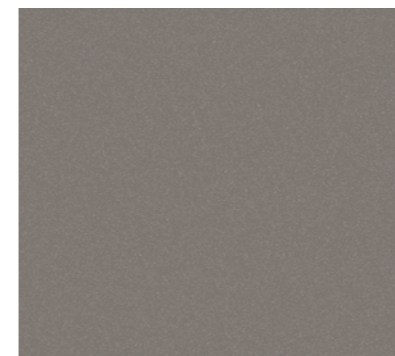
Cashmere MD ●



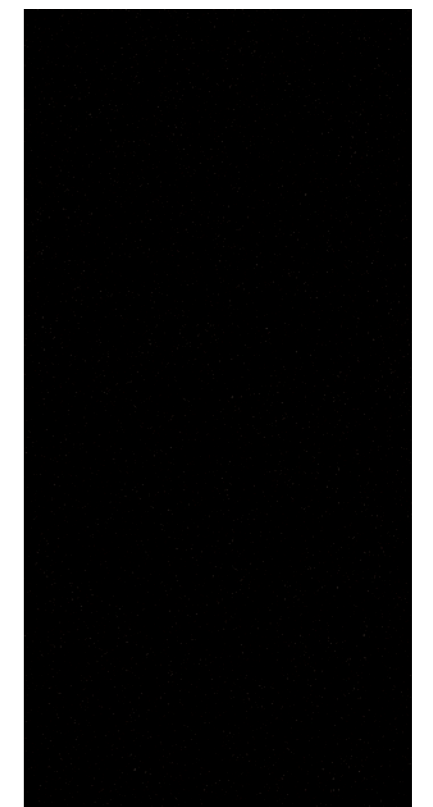
Gris Nube MD ●



Antracita MD ●



Basalto MD ●



Negro MD

● JUST IN TIME  
 (No disponible para Zénit Plus / Not available for Zénit Plus)

# Metal Plus



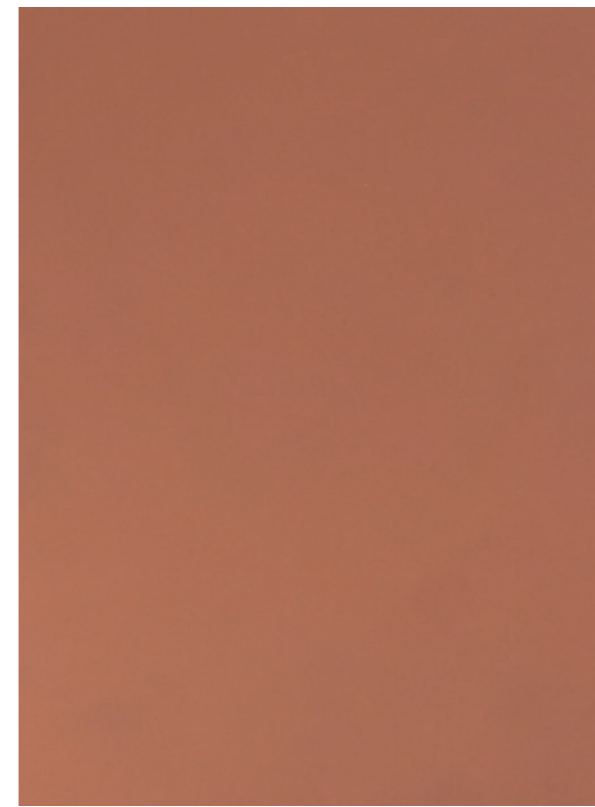
Ambiente de cocina en Zénit Metal Plus Copper SM. Diseñado por Rome Signature  
*Kitchen space in Zénit Metal Plus Copper SM. Designed by Rome Signature*



Metal Plus Light Gold



Metal Plus Champagne



Metal Plus Copper



Metal Plus Titanio

● JUST IN TIME  
(No disponible para Zénit Plus / Not available for Zénit Plus)



**Syncron**<sup>®</sup> by ALVIC  
structured panel LINE

Superficie texturizada con alto nivel decorativo y gran naturalidad

*Textured surface, highly decorative with a truly natural effect*

Superficie texturizada con alto nivel decorativo disponible en una atractiva gama de diseños que recrean maderas, piedras, textiles y otros materiales.

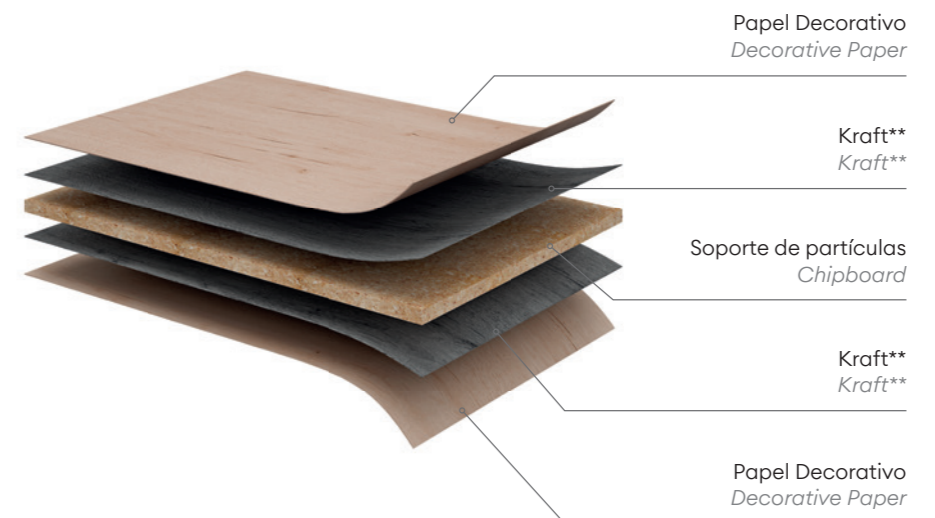
*Textured surface composed of an attractive range of designs that offer spaces with great naturalness and a high decorative level.*

Está compuesta de un soporte de partículas, sobre el cual se prensa el papel decorativo impregnado con resinas y aditivos, cuya fórmula única desarrollada por ALVIC permite conseguir acabados en relieve muy realistas y mayor profundidad en el detalle.

*It is developed on a particle board, on which the decorative paper impregnated with resins and additives is pressed. The unique resin and additive formula, developed by ALVIC, allows achieving very realistic relief finishes and greater depth of detail.*

Nuestros expertos seleccionan de manera cuidadosa, y con tecnología puntera, las planchas para cada diseño buscando siempre la mejor sincronización entre cada diseño y acabado y creando una superficie de gran realismo y naturalidad a la vista y al tacto.

*Our experts carefully select, using state-of-the-art technology, the finishes for each design, always seeking the best synchronisation between each design and finish and creating a highly realistic surface that recreates wood, textiles, stone and other materials.*



\*\* Depende del diseño  
\*\* Depends on the design



Acabados naturales  
Natural finishes



Tratamiento antibacteriano  
Antibacterial treatment



Estabilidad del color  
Colour stability



Resistencia al manchado  
Stain resistance



Respetuoso con el medio ambiente  
Environmentally friendly

"La Dolce Vita", Espacio Alvic Casa Decor 2021 by Fabián Níguez  
"La Dolce Vita" Alvic Space, Casa Decòr 2021, by Fabián Níguez

# Avantgarde

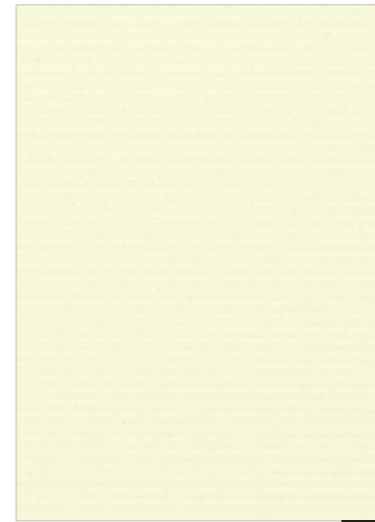
**Sincron**<sup>®</sup>  
by ALNIC  
structured panel LINE



Blanco Polar AV ● NEW



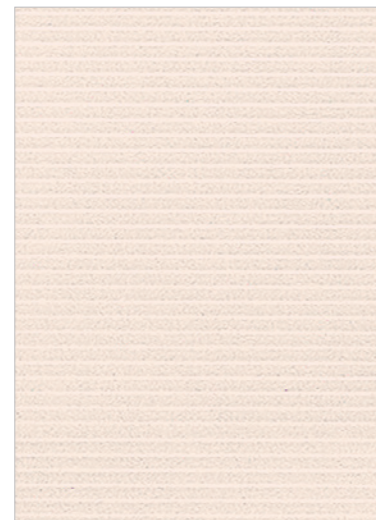
Blue Fresco AV ● NEW



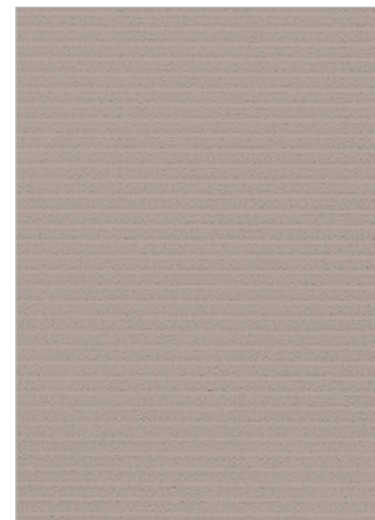
Ice Lemon AV ● NEW



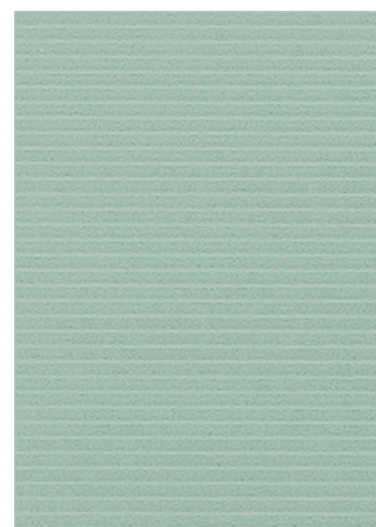
Paros AV ● NEW



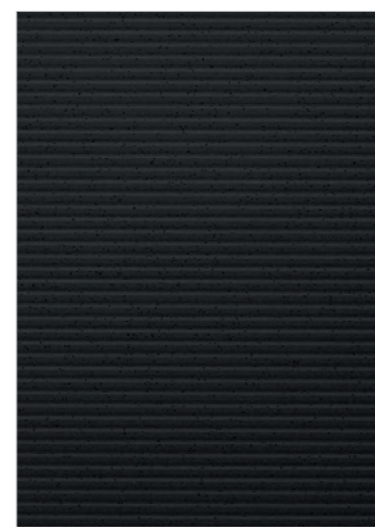
Raso AV ● NEW



Vulcano AV ● NEW



Vitamine AV ● NEW

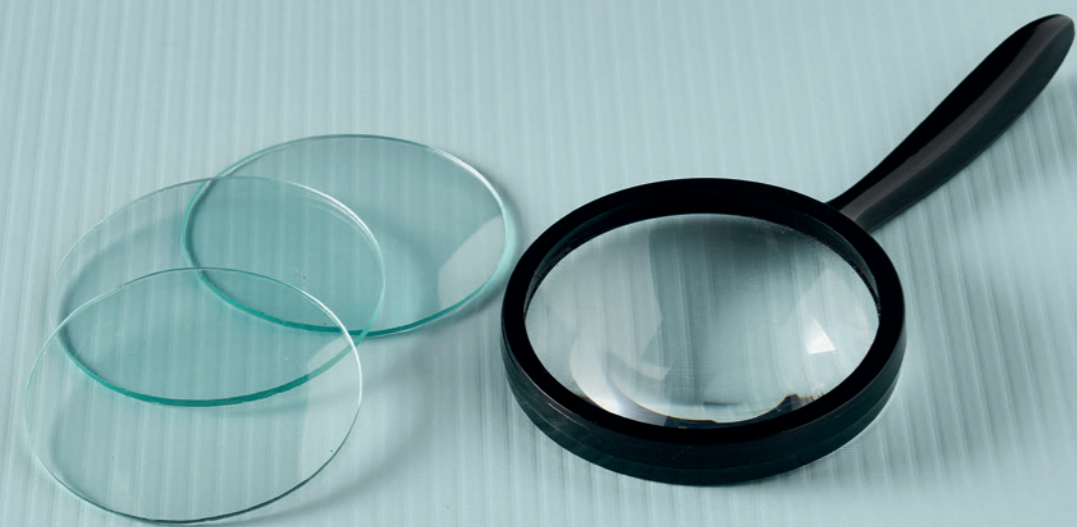


Negro AV ● NEW

● JUST IN TIME



Acabado / Finish: Avantgarde / Dynamic



# Blue Fresco DY

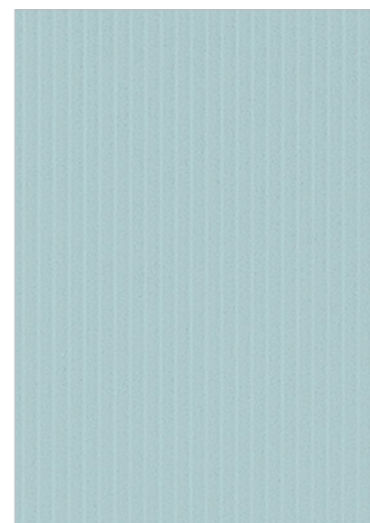
Acabado / Finish: Dynamic

## Dynamic

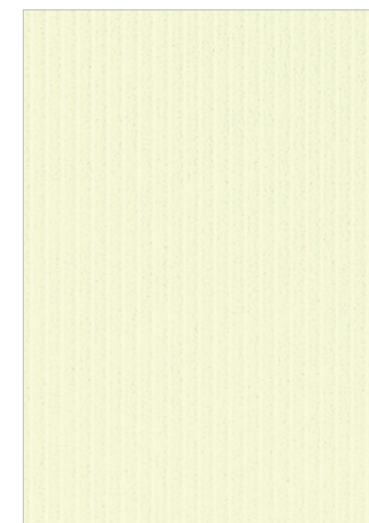
Syncron<sup>®</sup>  
structured panel LINE



Blanco Polar DY ● NEW



Blue Fresco DY ● NEW



Ice Lemon DY ● NEW



Paros DY ● NEW



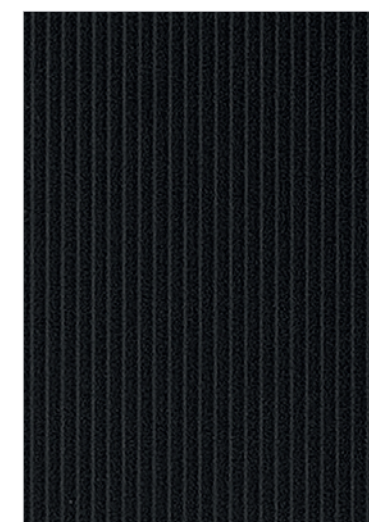
Raso DY ● NEW



Vulcano DY ● NEW



Vitamine DY ● NEW



Negro DY ● NEW

● JUST IN TIME

# Stratos

**Sincron**<sup>®</sup>  
structured panel LINE

Evocadores diseños conforman este imaginario pétreo inspirados en la delicadeza del mármol

*Evocative designs make up this stony imaginary inspired by the delicacy of marble*



Siena ST

● NEW



Bernini ST

● NEW

● JUST IN TIME



**Siena ST**

Acabado / Finish: **Stratos**



Sierra 01 ST

Acabado / Finish: Stratos

## Stratos

**Syncron**<sup>®</sup>  
structured panel LINE

El acabado Stratos realza los volúmenes de la piedra y recrea su tacto natural

*The Stratos finish enhances the volumes of the stone and recreates its natural feel*



Sierra 01 ST

NEW



Sierra 02 ST

NEW

# Atempo

**Sincron**<sup>®</sup> by ALNIC  
structured panel LINE

La grandeza del nogal proporciona calma y bienestar

*The grandeur of walnut provides calm and naturalness*



Picasso 01 AR ● NEW

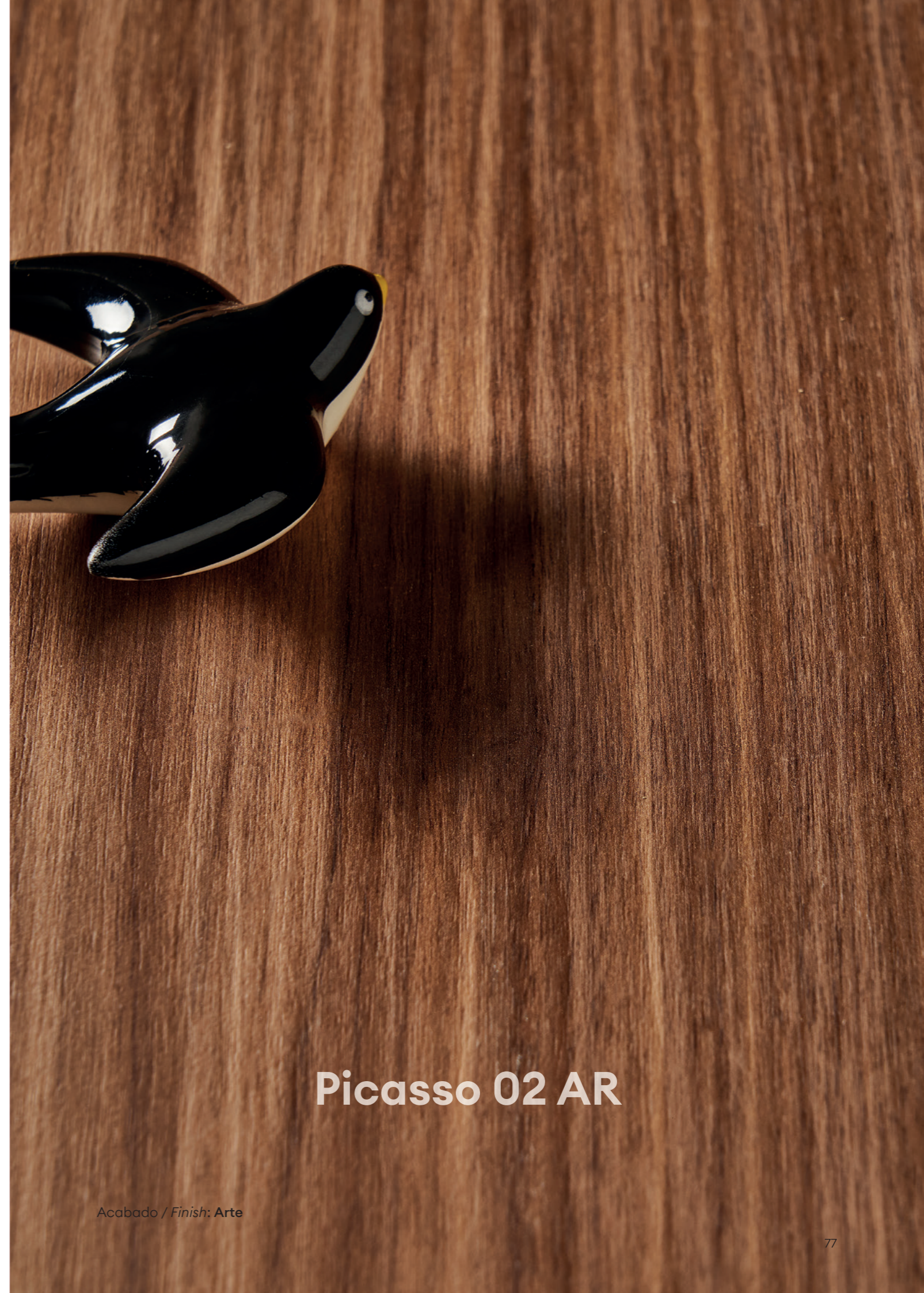


Picasso 02 AR ● NEW



Picasso 03 AR ● NEW

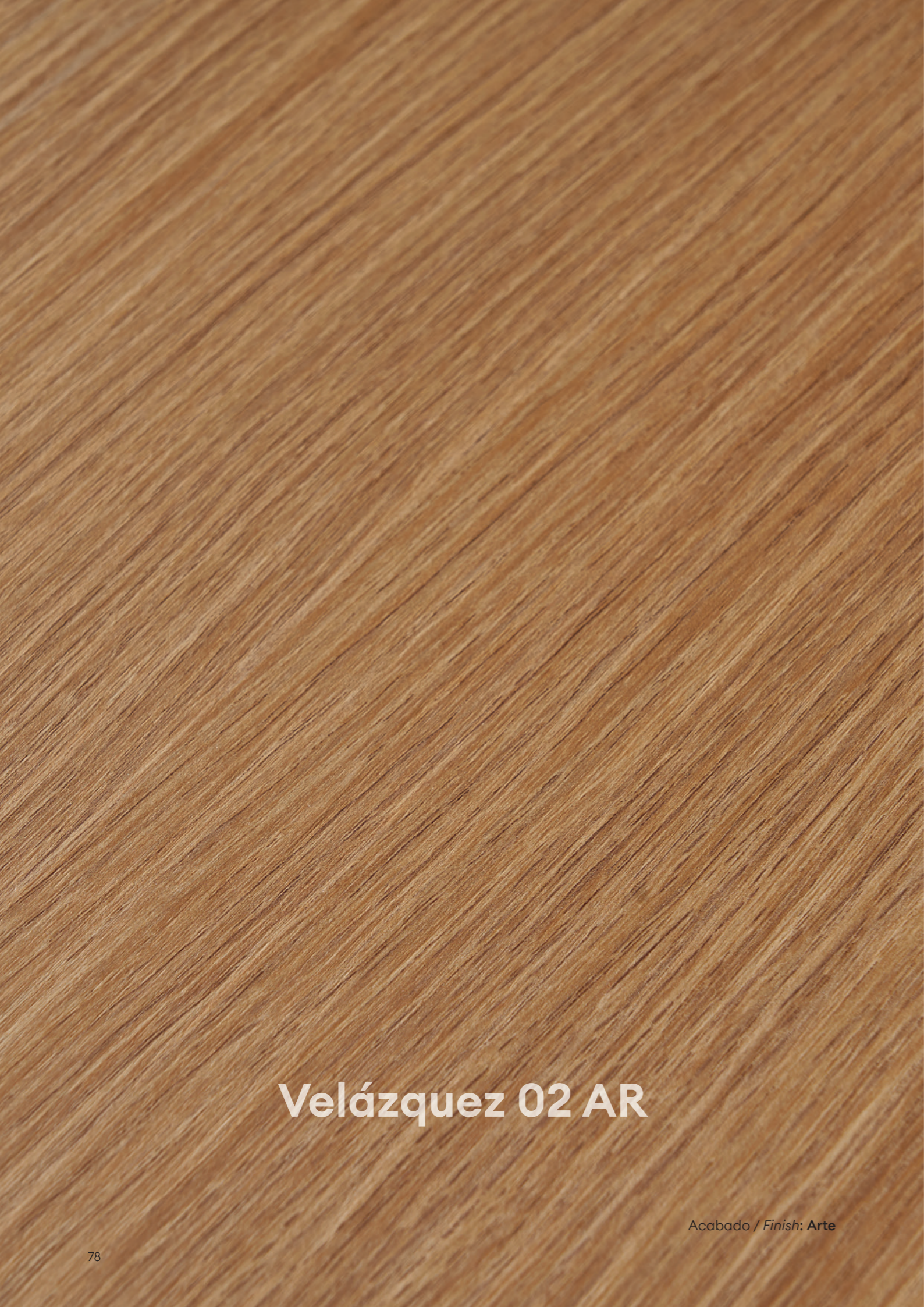
● JUST IN TIME



## Picasso 02 AR

Acabado / Finish: Arte





**Velázquez 02 AR**

Acabado / Finish: Arte

## Atempo

La naturalidad del roble con un diseño lineal de vetas depuradas

*The naturalness of oak with a linear design of refined grains*



Velázquez 01 AR

NEW



Velázquez 02 AR

NEW



Velázquez 03 AR

NEW

# Minerva

**Sincron**<sup>®</sup> by ALNIC  
structured panel LINE



Blanco Polar MI

NEW



Ice Lemon MI

NEW



Blue Fresco MI

NEW



Raso MI

NEW



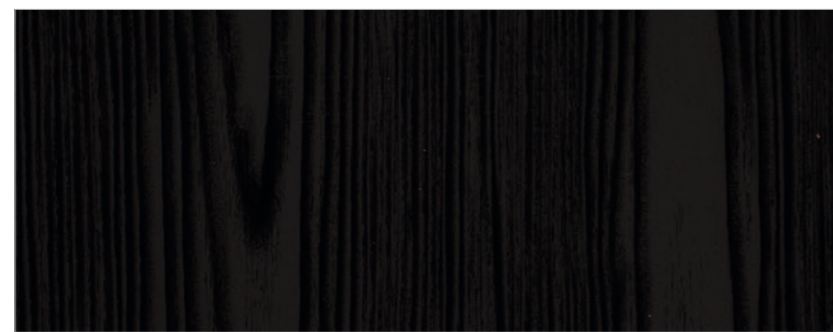
Vitamine MI

● NEW



Vulcano MI

● NEW



Negro MI

NEW

● JUST IN TIME



## Vitamine MI

Acabado / Finish: Minerva

# Porcelain



Porcelain 01 Gold JA



Porcelain 02 Gold JA



Porcelain 03 Silver JA

Acabado / Finish: Jade



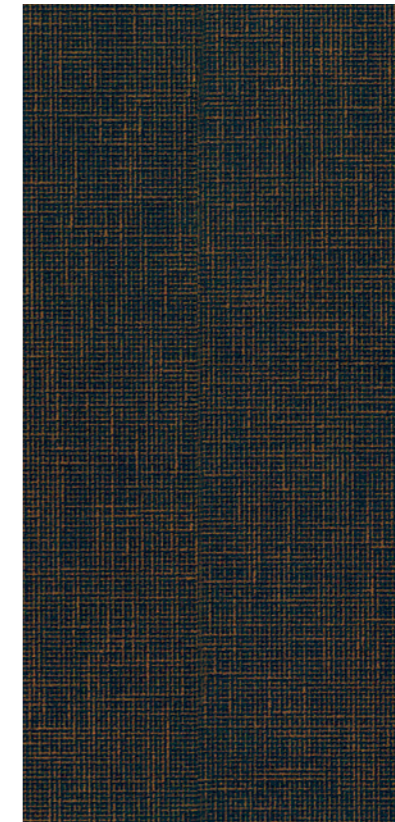
● JUST IN TIME

# Textil

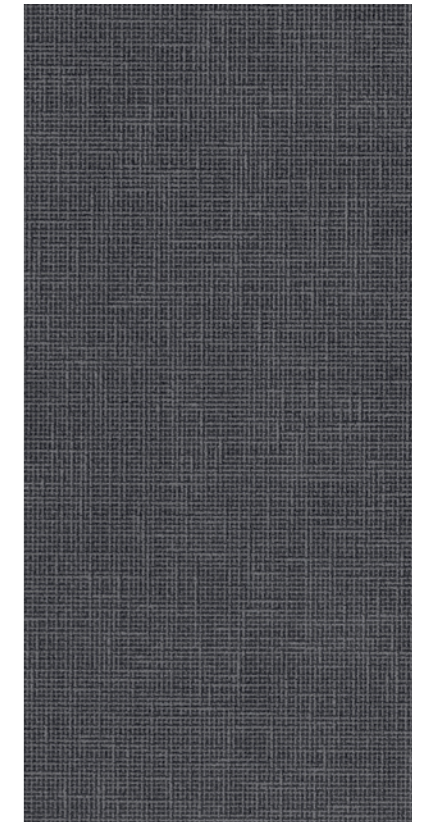
**Syncron**<sup>®</sup>  
by ALNIC  
structured panel LINE



Textil Plata TST



Textil Oro TST



Textil Grafito TST

Acabado / Finish: Tessuto



# Titán



Titán 01 PT



Titán 02 PT

Combina tonos suaves y un efecto óxido de gran versatilidad

*Combines soft tones and a rust effect for great versatility*

Acabado / Finish: Plaster



● JUST IN TIME



Baño en Sincron Titán 01 PT y R3-Supra Porcelain 02  
*Bath in Sincron Titan 01 PT and R3-Supra Porcelain 02*



Baño revestimiento en Sincron Spatt 01. Espacio "ELLE Decoration 2020"  
Bathroom wall panelling in Sincron Spatt 01. "ELLE Decoration 2020" space



Spatt 01 Blanco VE

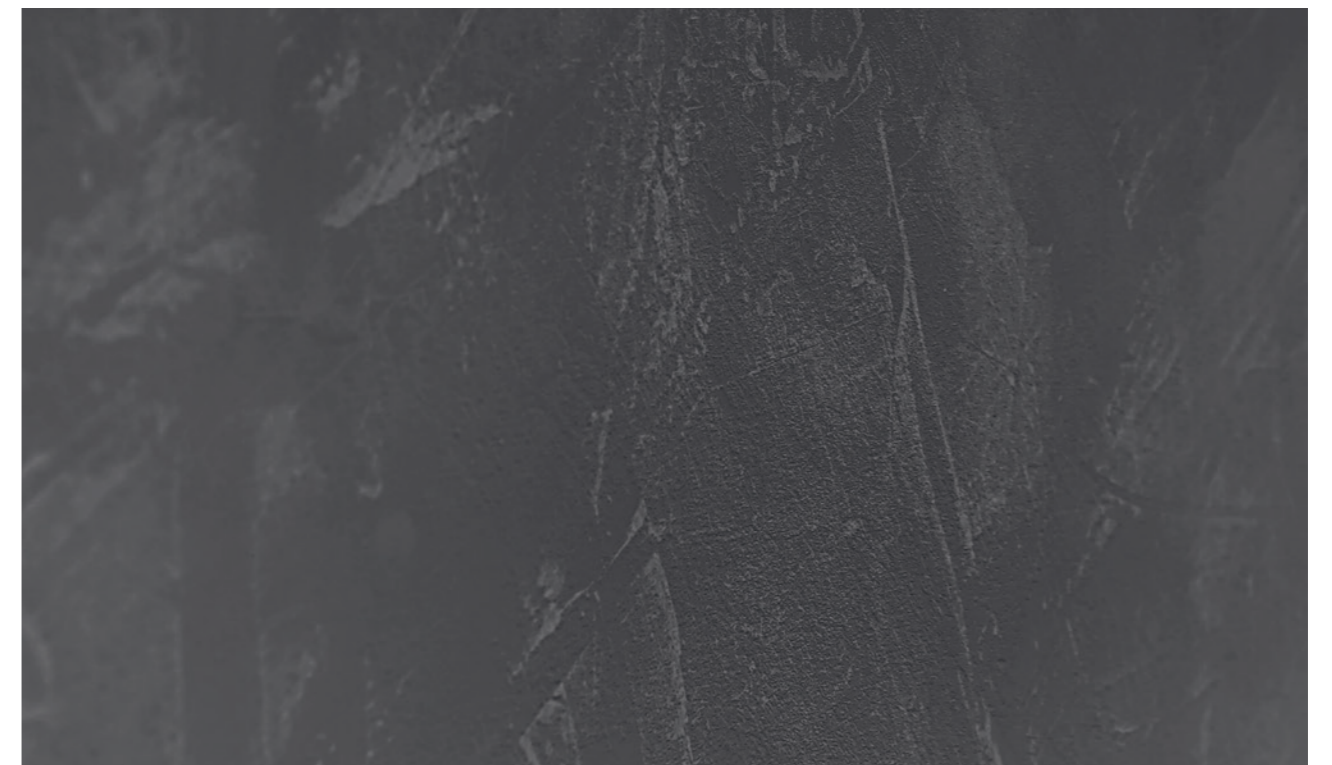


Spatt 05 Grafito VE

Pureza y realismo  
del estucado con el  
acabado Venice

*Purity and realism of the  
Venice finish coating*

Acabado / Finish: Venice



# Évora



Évora 03 JA



Évora 04 JA

Delicadas vetas  
en tonos grisáceos  
que proporcionan  
versatilidad

*Delicate veins in greyish  
tones for versatility*

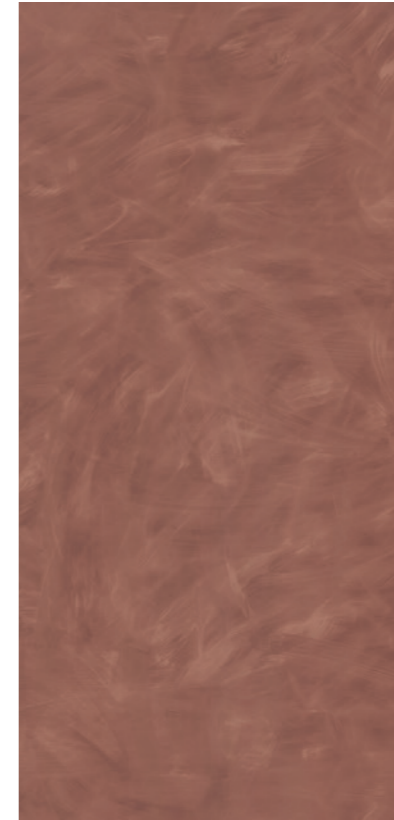
Acabado / Finish: **Jade**



# Steelboard



Steelboard Aluminio Glassé



Steelboard Copper Glassé



Steelboard Grafito Glassé

Acabado / Finish: **Glassé**



# Osiris



Osiris Plata FE



Osiris Grafito FE

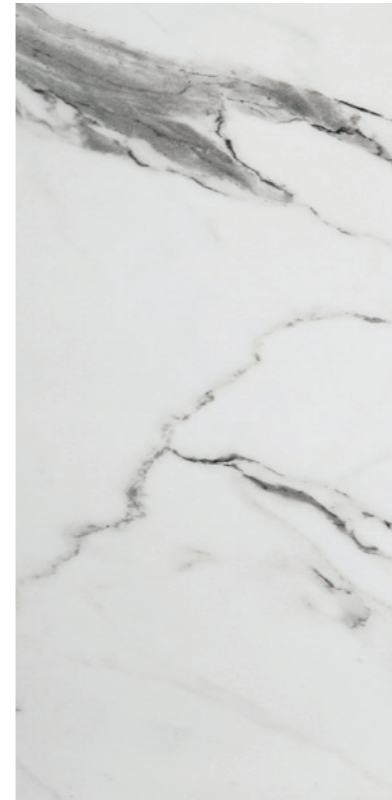
Efecto metalizado  
con una acabado de  
múltiples posibilidades

*Metallic effect with a  
multi-purpose finish*

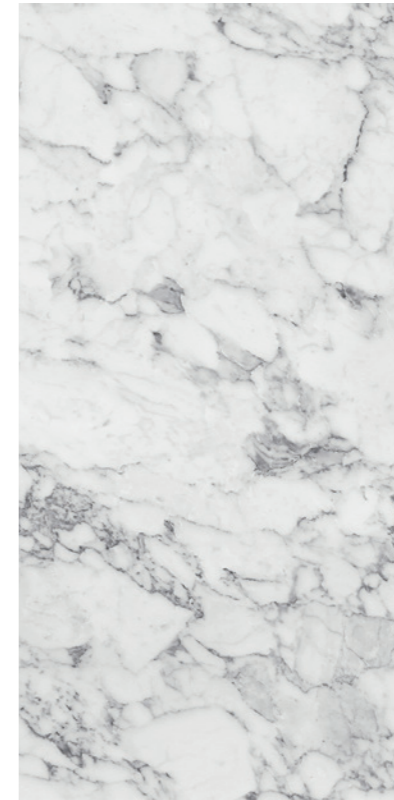
Acabado / Finish: **Ferro**



# Mármol



Mármol Versilia SS

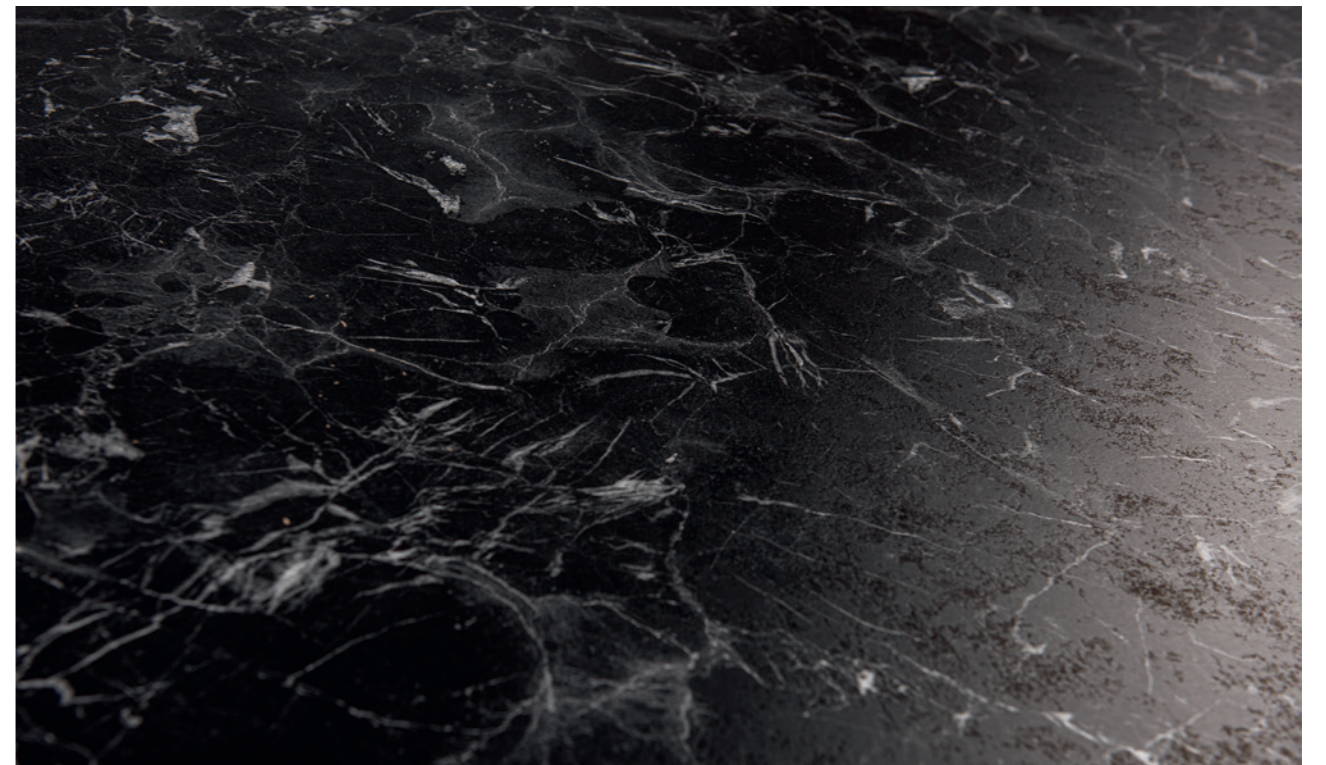


Oriental White SS



Oriental Black SS

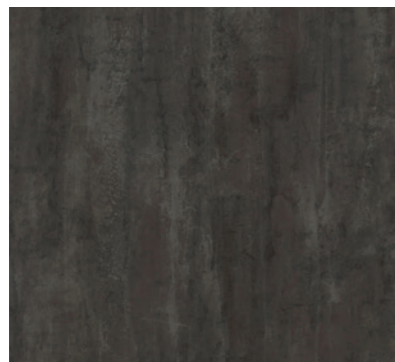
Acabado / Finish: **Silk Stone**



# Oxid



Oxid 01 Silver SS



Oxid 02 Forest SS

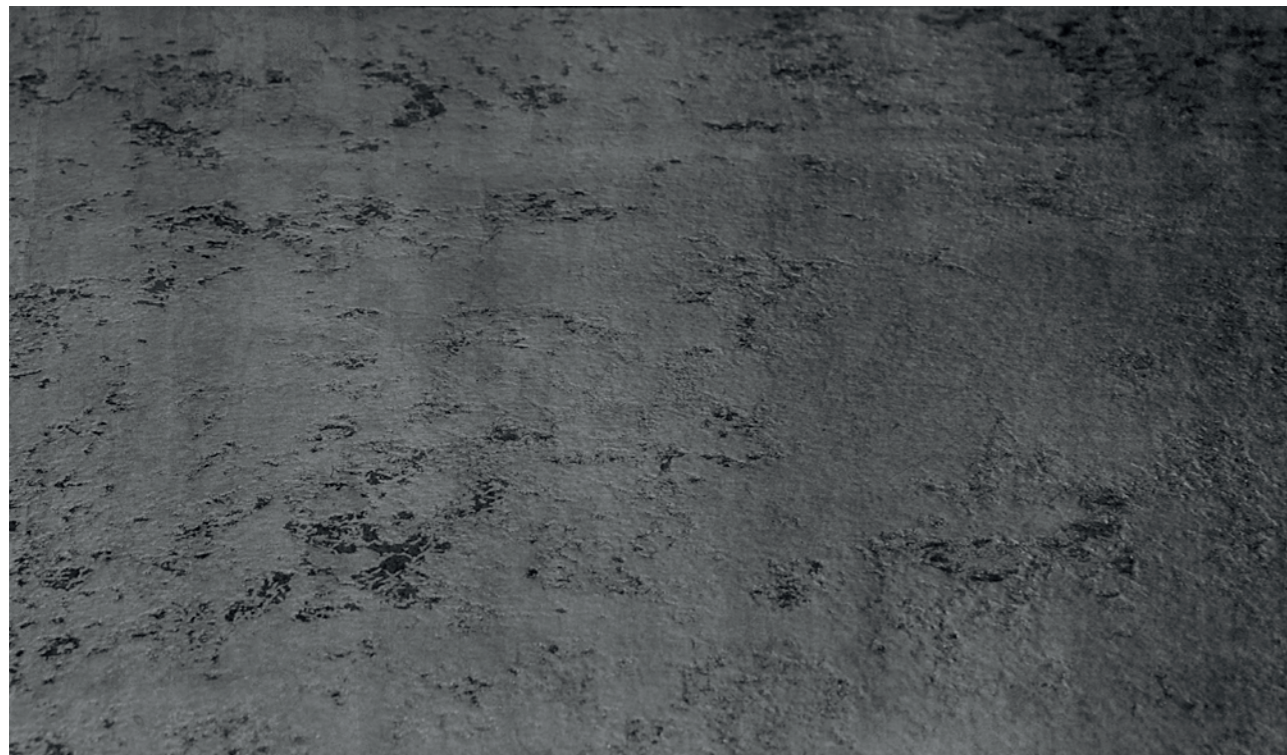


Oxid 03 Brown SS



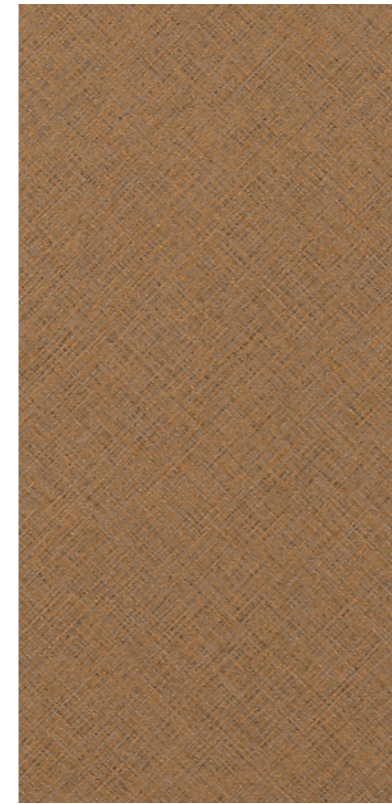
Oxid 04 Grafitt SS

Acabado / Finish: Silk Stone



● JUST IN TIME

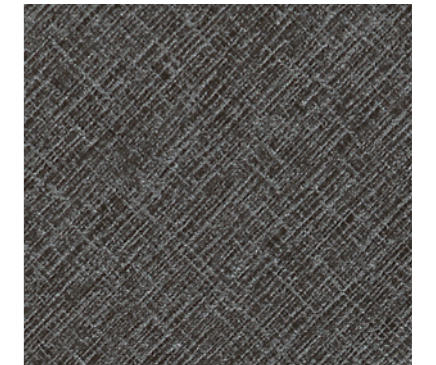
# Cross Metal



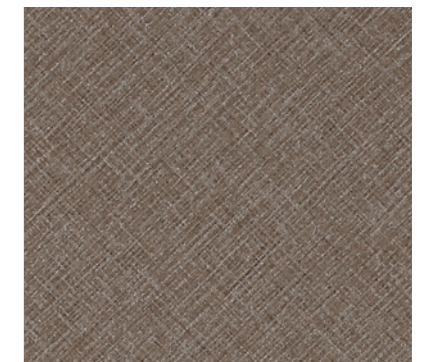
Cross Metal Light Gold



Cross Metal Copper

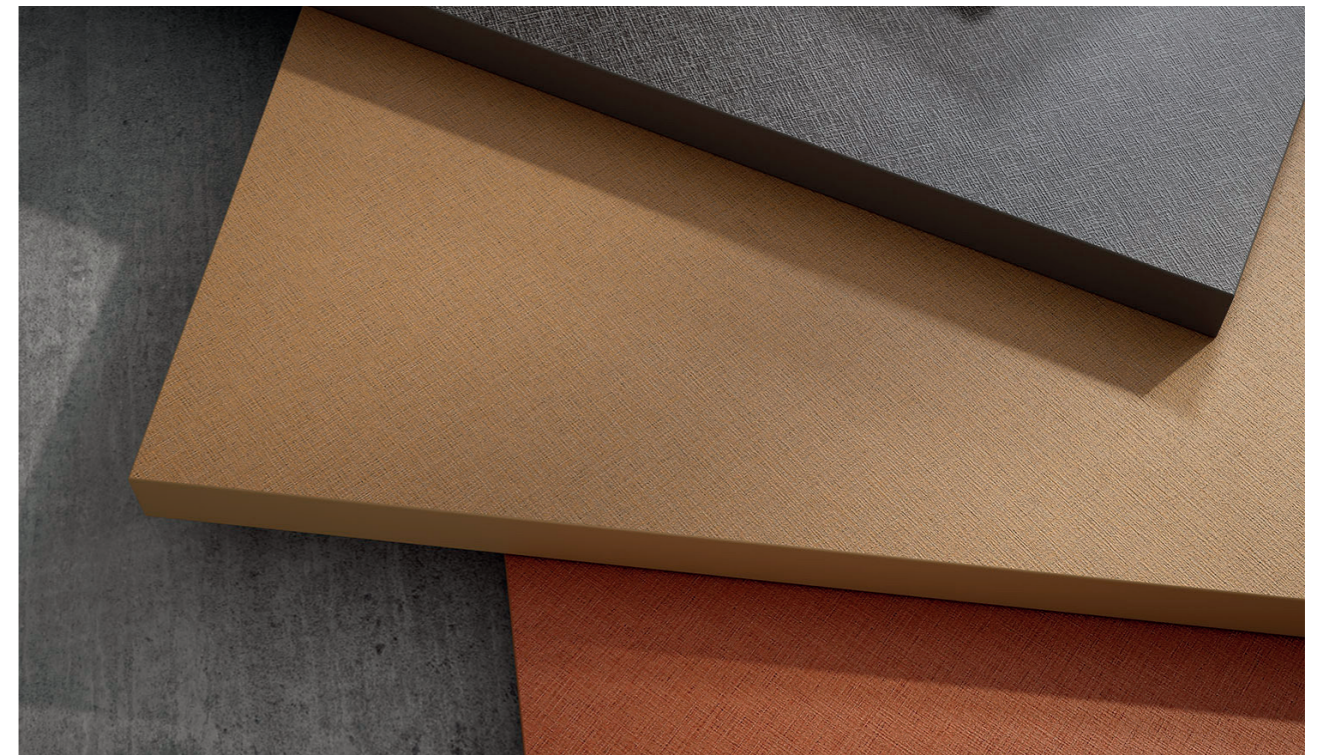


Cross Metal Titanio



Cross Metal Champagne

Acabado / Finish: Cross Metal



● JUST IN TIME



# Ice Cream



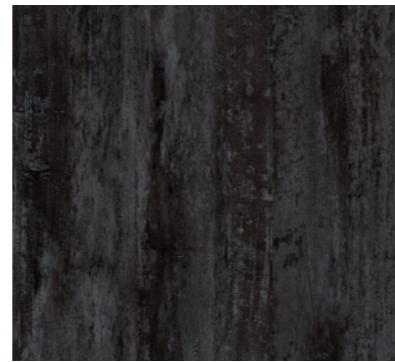
Ice Cream 01 JA



Ice Cream 02 JA

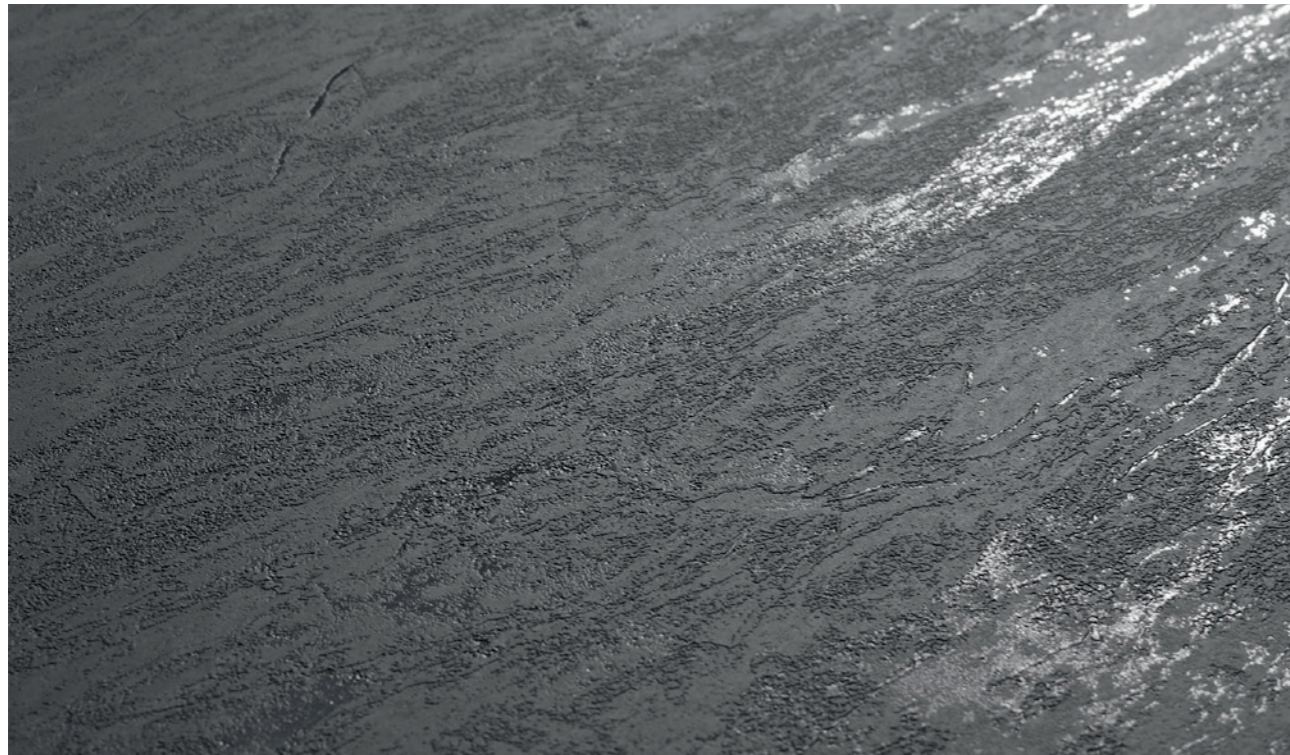


Ice Cream 03 JA



Ice Cream 04 JA

Acabado / Finish: Jade



● JUST IN TIME

# Royal Old Oak

Emula la belleza de la técnica de la madera quemada, Shou Sugi ban

*Emulates the beauty of the wood-burning technique, Shou Sugi ban*



Royal Old Oak 02



Acabado / Finish: Brulé

# Factory



Factory 01 CRT



Factory 02 CRT



Beton CRT

Acabado / Finish: **Concrete**



● JUST IN TIME

# Muratti



Roble Muratti 04



Roble Muratti 01



Roble Muratti 02

Acabado / Finish: **Muratti**



● JUST IN TIME

# Lakeland Oak



Lakeland Oak 01



Lakeland Oak 03

Madera natural  
para un acabado de  
estilo rústico

*Natural wood for a  
rustic-style finish*

Acabado / Finish: **Sierra**



Ambiente de cocina en Synchron Lakeland Oak 03, diseñado por The Kitchen Company  
*Kitchen space in Synchron Lakeland Oak 03, designed by The Kitchen Company*

# Nocce



Nocce 01



Nocce 03

Celebra la belleza de la naturaleza con un diseño lleno de contrastes

*Celebrate the beauty of nature with a design full of contrasts*

Acabado / Finish: Highland



● JUST IN TIME



Cocina en Sincron Nocce 01 y Zénit Verde Salvia SM, diseñado por The Kitchen Company  
*Kitchen in Sincron Nocce 01 and Zénit Verde Salvia SM, designed by The Kitchen Company*



Mueble de salón en Sincron Olmo 03 JZ, diseñado por Ruiz-Velázquez  
*Living room furniture in Sincron Olmo 03 JZ, designed by Ruiz-Velázquez*



Blanco JZ

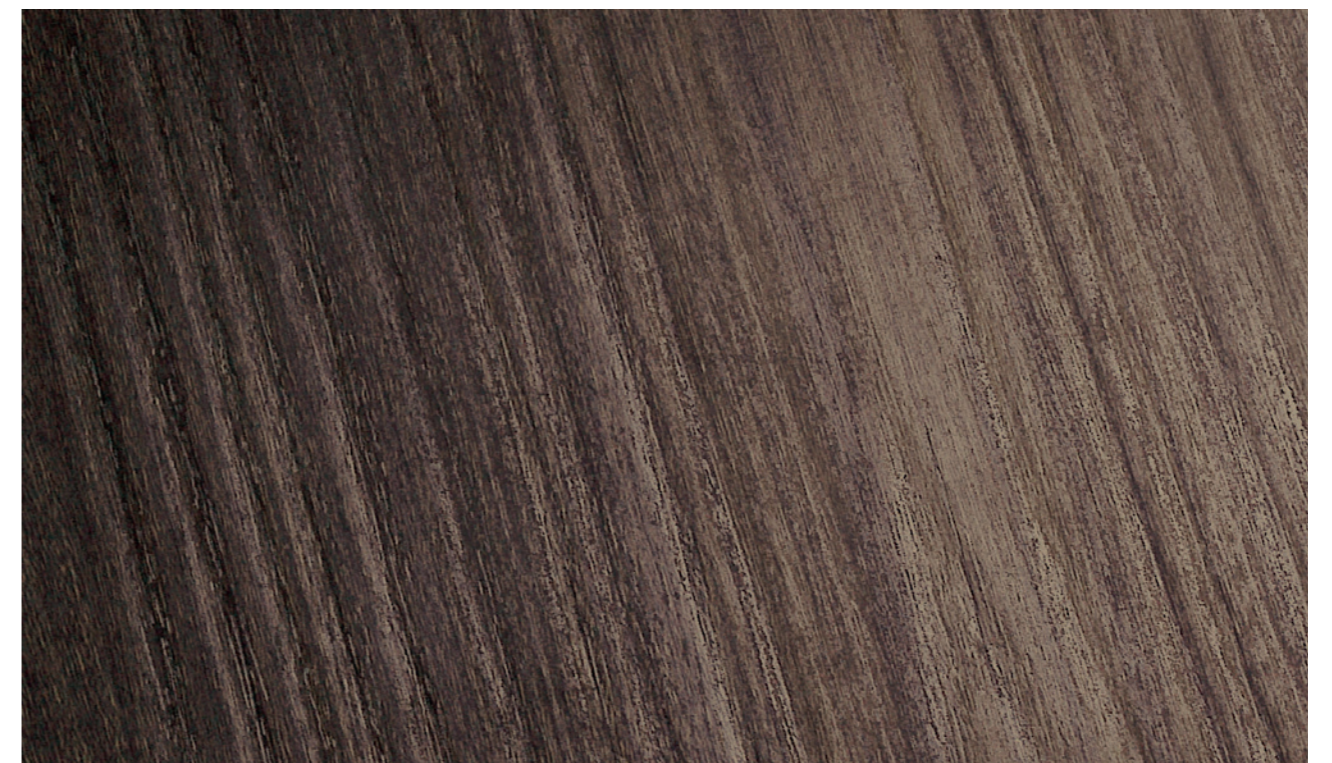


Olmo 01 JZ



Olmo 03 JZ

Acabado / Finish: Jerez



# Woodline



Woodline 03 BA



Woodline 04 BA

Elegancia y  
atemporalidad para un  
diseño de vetas lineales

*Elegance and timelessness  
for a linear grain design*

Acabado / Finish: **Balatus**



● JUST IN TIME

# Anniversary Oak



Anniversary Oak 01



Anniversary Oak 02



Anniversary Oak 03



Acabado / Finish: **Registro**



● JUST IN TIME

# Como Ash



Como Ash 01



Como Ash 02



Como Ash 03

Acabado / Finish: Registro



Ambiente de cocina en Sincron Como Ash 02 y Zénit Agua Marina SM, diseñado por The Kitchen Company  
Kitchen space in Sincron Como Ash 02 and Zénit Agua Marina SM, designed by The Kitchen Company

# Nogal Rosales



Nogal Rosales 01



Nogal Rosales 02



Nogal Rosales 03

Acabado / Finish: Registro



Showroom de Alvic "Hermosilla 77", Madrid  
Alvic Showroom "Hermosilla 77", Madrid



# Art Oak



Mueble de baño en Sincron Art Oak 03  
Bathroom furniture in Sincron Art Oak 03

La perfecta  
sincronización  
del roble natural

*The perfect  
synchronisation of  
natural oak*



Art Oak 03

● JUST IN TIME



Acabado / Finish: Registro

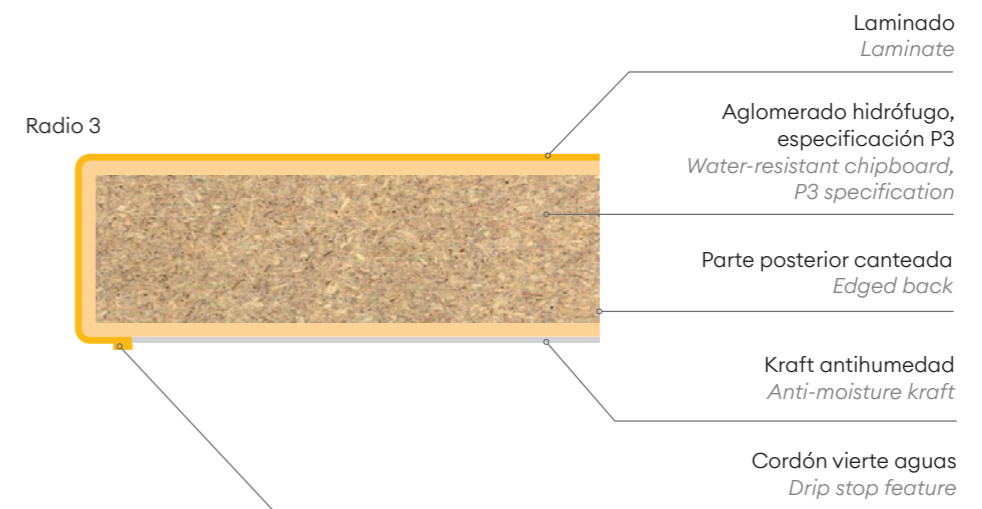


Encimera hidrófuga  
con laminado HPL  
de alta calidad

*Moisture-resistant  
worktop with high-quality  
HPL laminate*

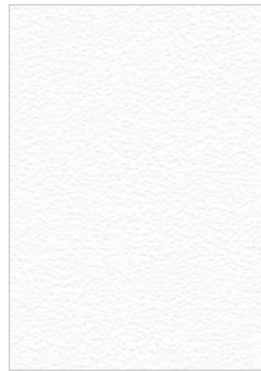
La tecnología R3 Supra de ALVIC da como resultado encimeras resistentes, duraderas y atractivas. Su composición presenta un tablero base de partículas de madera hidrófuga recubierto con laminado de alta presión en la cara superior y papel kraft en la inferior. Tiene aplicación en mobiliario de cocina para planos de trabajo.

*ALVIC's R3 Supra technology results in strong, durable and attractive worktops. Its composition features a moisture-resistant chipboard coated with high-pressure laminate on the top side and kraft paper on the underside. It has application in kitchen furniture for worktops.*



-   
 Resistencia a la abrasión  
*Abrasion resistance*
-   
 Resistencia al calor seco 180°  
*Resistance to dry heat 180°*
-   
 Resistencia al calor húmedo  
*Resistance to humid heat*
-   
 Alta resistencia superficial  
*High surface resistance*
-   
 Fácil limpieza y mantenimiento  
*Easy cleaning and maintenance*
-   
 Resistencia al vapor de agua  
*Resistance to steam*

# Encimeras / Worktops



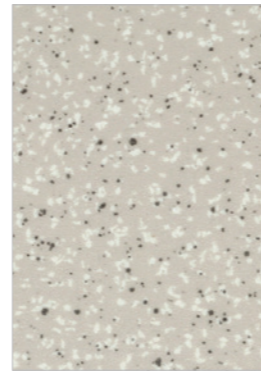
EP-002-SF / Blanco Soft ●●



EP-050-MT / Mármol Micado ●●



EP-112-GLS / Snow Terraz Blanco ●●



EP-023-MT / Lunar Claro ●●



EP-087-IS Fresko 51300 ●●



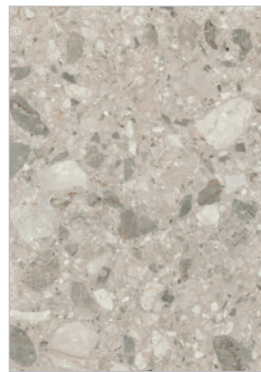
EP-086-IS Fresko 51301 ●●



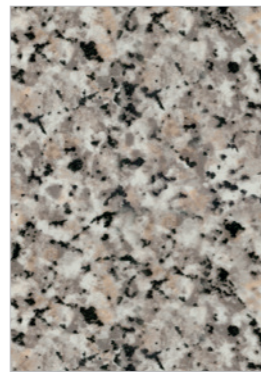
EP-091-IS Cemento Natural ●●



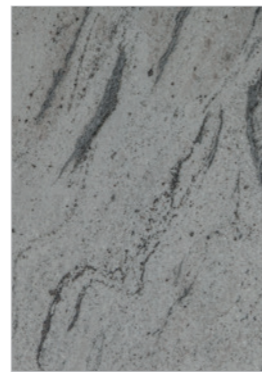
EP-092-IS Cemento Oscuro ●●



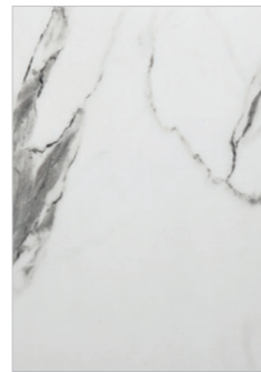
EP-149-SN / Roca Plutónica ●●



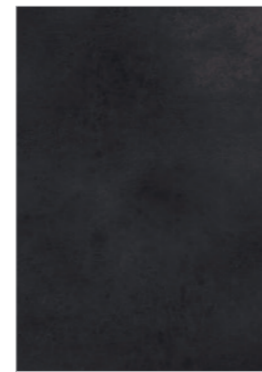
EP-031-BR / Granito Clásico ●



EP-138-PI Piedra Tripura ●●



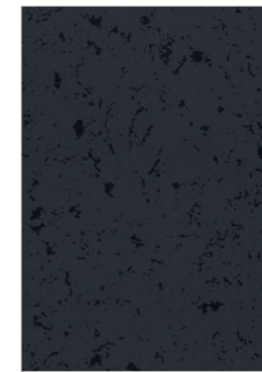
EP-140-SM Mármol Versilia ●●



EP-147-PE Porcelánico Carbón ●●



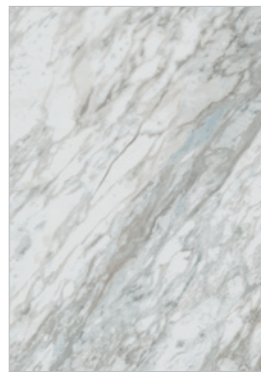
EP-146-PE Porcelánico Tierra ●



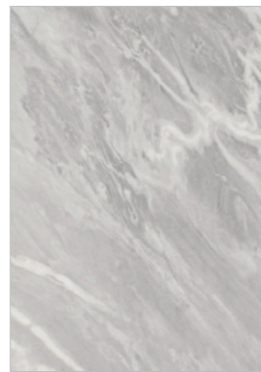
EP-090-PI Piedra Carbón ●●



EP-153-AT Pino Tintado ●●



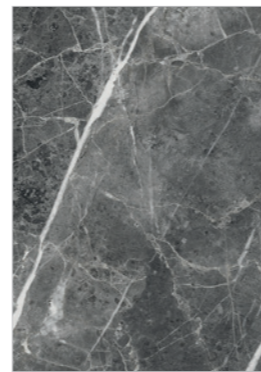
EP-152-YO Mármol Ibiza ●●



EP-144-YO Mármol Nuvolato ●●



EP-143-ST / Mármol Himeto ●●



EP-148-PE / Mármol Tepeaca ●●



EP-145-NAT Madera Vintage ●●



EP-124-OP Roble Sonoma Nat ●●



EP-141-NAT Anniversary 02 Oak ●●



EP-142-SN Roble Ibérico ●●



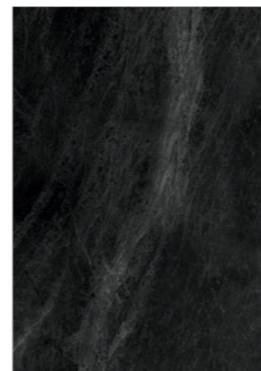
EP-120-AET / Mármol Maya Blanco ●●



EP-150-YO / Mármol Travertino ●●



EP-151-ST / Mármol Marquina ●●



EP-116-BR / Mármol Markina BR ●●



EP-096-OP Nogal Parquet ●●



EP-154-YO Porcelain 01 Gold ●●



EP-155-YO Porcelain 02 Gold ●●



EP-156-YO Porcelain 03 Silver ●●

## Superficies y componentes de mobiliario sostenibles

### *Sustainable surfaces and furniture components*

Comprometidos con el respeto al medio ambiente, ALVIC tiene implementado un sistema integrado de gestión (ISO 14001) cuyo principal objetivo es minimizar el impacto que, como consecuencia de la actividad industrial se pudiera provocar en el medio ambiente.

Sus tableros están compuestos por fibra o partículas de madera que proviene de procesos certificados de custodia forestal, así como de material reciclado. La compañía cuenta con los certificados PEFC y FSC de cadena de custodia forestales, lo que garantiza un uso sostenible de los mismos.

Además, su proceso de fabricación se centra en crear nuevos productos mejorados que sean más resistentes al paso del tiempo y al uso diario, de forma que se incremente su vida útil y, por tanto, se reduzca su impacto ambiental.

---

*Committed to respecting the environment and contributing to a sustainable approach, ALVIC has implemented an integrated management system (ISO 14001) whose main objective is to minimise the impact that industrial activity may have on the environment.*

*Its boards are composed of wood fibre or particles that come from certified forest stewardship processes, as well as recycled material. The company has PEFC and FSC forest chain of custody certificates, which guarantees a sustainable management of the world forest.*

*In addition, its manufacturing process focuses on creating new and improved products that are more resistant to the passage of time and daily use, so that their useful life is increased and, therefore, their environmental impact is reduced.*

---



## Producto: especificaciones técnicas

### *Product: technical specifications*

Nuestros diseños en Luxe, Zénit y Sincron están disponibles en paneles, piezas acabadas y puertas, con cantos y laminados a juego. Además, ofrecemos una gama de diseños para encimeras y módulos.

Nuestro amplio catálogo está pensado para que los productos y diseños se puedan combinar entre sí, garantizando una gran variedad de configuraciones posibles a arquitectos, diseñadores e interioristas.

*Our designs in Luxe, Zénit and Sincron are available in panels, finished pieces and doors, with matching edges and laminates. We also offer a range of designs for counter tops and cabinets.*

*Our wide catalogue has been designed to allow products and designs to be combined, assuring a great variety of possible configurations for architects, designers and interior design professionals.*



Medidas estándar: 2750x1220x18mm.  
Otros espesores de soporte (8, 10, 16, 22 y 25 mm)  
no disponibles en servicio JIT.

Disponibles canto a juego.

Posibilidad de pedir laminado bajo consulta.












*Measures: 2750x1220x18mm.  
Other thicknesses (8, 10, 16, 22 and 25 mm)  
not available in JIT service.*

*Matching edges available.*

*Possibility of ordering laminated on request.*



Armario de cocina en Synchron Woodline 03  
Kitchen cabinet in Synchron Woodline 03

							Norma Standard
 Limpieza fácil <i>Easy cleaning</i>		●	●	●	●	●	
 Larga durabilidad <i>Long durability</i>		●	●	●	●	●	
 Tratamiento antibacteria <i>Antibacterial treatment</i>		●	●			●	ASTM E2180 JIS Z2801
 Alta resistencia al rayado <i>High scratch resistance</i>		●	●	●	●		EN-15186-A
 Alta resistencia a la abrasión <i>High abrasion resistance</i>		●		●	●		EN-14323
 Resistencia al manchado <i>Stain resistance</i>		●	●	●	●	●	EN-14323
 Estabilidad del color <i>Color stability</i>		●	●	●	●	●	EN-14323
 Respetuosos con el medio ambiente <i>Environmentally friendly</i>		●	●	●	●	●	
 Tacto seda <i>Silk touch</i>				●	●		
 Anti-huellas <i>Anti-fingerprints</i>				●	●		
 Acabados naturales <i>Natural finishes</i>						●	
 Alto brillo <i>High gloss</i>		●	●				ISO-2813
 Nivel de brillo 101 GU <i>Gloss level 101 GU</i>		●					ISO-2813
 Efecto barrera <i>Barrier effect</i>		●		●			
 Alta calidad imagen reflejada <i>High reflected image</i>		●	●				ASTM D5767

	Pieza Just in Time Just in Time piece	Tablero Just in Time Just in Time panel	Tablero Panel
AGAVE			●
AGUA MARINA	●	●	●
ANTRACITA	●	●	●
AZUL ÍNDIGO			●
AZUL MARINO	●	●	●
BASALTO	●	●	●
BERNINI			●
BLANCO	●	●	●
BLANCO POLAR	●	●	●
BURDEOS	●	●	●
CAMEO			●
CASHMERE	●	●	●
COTTO	●	●	●
CROMA BLUE	●	●	●
CROMA PEACH	●	●	●
CROMA SUNSET			●
CURRY			●
CUZCO COBRE			●
CUZCO GRAFIT			●
CUZCO ORO			●
CUZCO ROYAL GOLD			●
CUZCO SILVER			●
GRIS-2	●	●	●
GRIS NUBE	●	●	●
GRIS PERLA			●
GRIS PLOMO	●	●	●
IVORY			●
MAGNOLIA	●	●	●
MÁRMOL VERSILIA			●
MÉLANGE 01 OCRE			●
METALLO 01 SILVER	●	●	●
METALLO 02 GREEN			●
METALLO 03 BROWN			●
METALLO 04 GRAFIT	●	●	●
NEGRO	●	●	●
NOGAL ROSALES 02			●
NOGAL ROSALES 03			●
NUVOLA 01			●
NUVOLA 02			●
NUVOLA 03			●

	Pieza Just in Time Just in Time piece	Tablero Just in Time Just in Time panel	Tablero Panel
OLMO			●
ORIENTAL BLACK			●
ORIENTAL WHITE			●
OSIRIS GRAFITO			●
OSIRIS PLATA			●
PICASSO 01			●
PICASSO 02			●
PICASSO 03			●
PORCELAIN 01 GOLD			●
PORCELAIN 02 GOLD			●
PORCELAIN 03 SILVER			●
ROJO	●	●	●
SIENA			●
SIERRA 01			●
SIERRA 02			●
STEELBOARD ALUMINIO			●
STEELBOARD COPPER			●
STEELBOARD GRAFITO			●
STUCO 01 BLANCO			●
STUCO 05 GRAFITO			●
TAUPÉ			●
TEXTIL GRAFITO			●
TEXTIL ORO			●
TEXTIL PLATA			●
TITÁN 01			●
TITÁN 02			●
VELÁZQUEZ 03			●
VERDE SALVIA	●	●	●
<b>LUXE PEARL EFFECT</b>			
ANTRACITA PEARL			●
BLANCO COLONIAL PEARL			●
BASALTO PEARL			●
BURDEOS PEARL			●
GRIS PLOMO PEARL			●
MARFIL PEARL			●
NEGRO PEARL			●

Cualquier diseño se puede fabricar en cualquier acabado bajo consulta.  
Any design could be manufactured in any finish on request.

	Pieza Just in Time Just in Time piece	Tablero Just in Time Just in Time panel	Tablero Panel
AGAVE SM			●
AGUA MARINA SM	●	●	●
ALMAGRA SM	●	●	●
ANTRACITA SM	●	●	●
ARENA SM	●	●	●
AZUL ÍNDIGO SM	●	●	●
AZUL MARINO SM	●	●	●
BASALTO SM	●	●	●
BERNINI SM			●
BLANCO SM	●	●	●
BLANCO POLAR SM	●	●	●
BURDEOS SM	●	●	●
CAMEL SM	●	●	●
CAMEO SM			●
CASHMERE SM	●	●	●
COTTO SM	●	●	●
CROMA BLUE SM	●	●	●
CROMA PEACH SM	●	●	●
CROMA SUNSET SM			●
CURRY SM			●
GINGER SM	●	●	●
GRIS NUBE SM	●	●	●
GRIS PERLA SM			●
GRIS PLOMO SM	●	●	●
MAGNOLIA SM	●	●	●
MÁRMOL VERSILIA SM	●	●	●
NEGRO SM	●	●	●
NUVOLA 01 SM	●	●	●
NUVOLA 02 SM			●
NUVOLA 03 SM	●	●	●
ORIENTAL BLACK SM			●
ORIENTAL WHITE SM			●
OSIRIS GRAFITO SM			●
OSIRIS PLATA SM	●	●	●
PICASSO 01 SM	●	●	●
PICASSO 02 SM	●	●	●
PICASSO 03 SM			●
PORCELAIN 01 GOLD SM	●	●	●
PORCELAIN 02 GOLD SM			●
PORCELAIN 03 SILVER SM	●	●	●

	Pieza Just in Time Just in Time piece	Tablero Just in Time Just in Time panel	Tablero Panel
SIENA SM			●
SIERRA 01 SM			●
SIERRA 02 SM			●
STEELBOARD ALUMINIO SM	●	●	●
STEELBOARD COPPER SM	●	●	●
STEELBOARD GRAFITO SM	●	●	●
TAUPÉ			●
TITÁN 01 SM			●
TITÁN 02 SM			●
TORTORA SM	●	●	●
VELÁZQUEZ 01 SM			●
VELÁZQUEZ 02 SM			●
VELÁZQUEZ 03 SM			●
VERDE SALVIA SM	●	●	●
<b>ZÉNIT METALDECO</b>			
ANTRACITA MD	●	●	●
BASALTO MD	●	●	●
BLANCO MD			●
CASHMERE MD	●	●	●
GRIS NUBE MD	●	●	●
MAGNOLIA MD			●
NEGRO MD			●

Cualquier diseño se puede fabricar en cualquier acabado bajo consulta.  
Any design could be manufactured in any finish on request.

	Pieza Just in Time Just in Time piece	Tablero Just in Time Just in Time panel	Tablero Panel
AGUA MARINA			●
ANTRACITA			●
AZUL ÍNDIGO	●	●	●
AZUL MARINO			●
BASALTO			●
BLANCO POLAR	●	●	●
BURDEOS			●
CURRY			●
CUZCO COBRE			●
CUZCO GRAFIT			●
CUZCO ORO			●
CUZCO ROYAL GOLD			●
CUZCO SILVER			●
GRIS PLOMO			●
IVORY			●
MÁRMOL VERSILIA			●
MÉLANGE 01 OCRE			●
METALLO 01 SILVER			●
METALLO 02 GREEN			●
METALLO 03 BROWN			●
METALLO 04 GRAFIT			●
NEGRO			●
NOGAL ROSALES 02	●	●	●
NOGAL ROSALES 03	●	●	●
ORIENTAL BLACK			●
ORIENTAL WHITE			●
OSIRIS GRAFITO			●
OSIRIS PLATA			●
PORCELAIN 01 GOLD	●	●	●
PORCELAIN 02 GOLD			●
PORCELAIN 03 SILVER			●
ROJO			●
STEELBOARD ALUMINIO			●
STEELBOARD COPPER			●
STEELBOARD GRAFITO			●
STUCO 01 BLANCO			●
STUCO 05 GRAFITO			●
TEXTIL GRAFITO			●
TEXTIL ORO			●
TEXTIL PLATA			●
TITÁN 01			●
TITÁN 02			●
VERDE SALVIA			●

Directorio de productos  
Product directory

	Pieza Just in Time Just in Time piece	Tablero Just in Time Just in Time panel	Tablero Panel
AGUA MARINA SM			●
ANTRACITA SM			●
AZUL ÍNDIGO SM			●
AZUL MARINO SM			●
BASALTO SM			●
BLANCO SM			●
BLANCO POLAR SM			●
BURDEOS SM			●
CASHMERE SM			●
CURRY SM			●
GRIS NUBE SM			●
GRIS PERLA SM			●
GRIS PLOMO SM			●
MAGNOLIA SM			●
MÁRMOL VERSILIA SM			●
NEGRO SM			●
ORIENTAL BLACK SM			●
ORIENTAL WHITE SM			●
OSIRIS GRAFITO SM			●
OSIRIS PLATA SM			●
PORCELAIN 01 GOLD SM			●
PORCELAIN 02 GOLD SM			●
PORCELAIN 03 SILVER SM			●
STEELBOARD ALUMINIO SM			●
STEELBOARD COPPER SM			●
STEELBOARD GRAFITO SM			●
TITÁN 01 SM			●
TITÁN 02 SM			●
VERDE SALVIA SM			●
<b>ZÉNIT METAL PLUS</b>			
METAL PLUS COPPER	●	●	●
METAL PLUS CHAMPAGNE	●	●	●
METAL PLUS LIGHT GOLD	●	●	●
METAL PLUS TITANIO	●	●	●

Cualquier diseño se puede fabricar en cualquier acabado bajo consulta.  
Any design could be manufactured in any finish on request.

	Pieza Just in Time Just in Time piece	Tablero Just in Time Just in Time panel	Tablero Panel
ANNIVERSARY OAK 01	●	●	●
ANNIVERSARY OAK 02	●	●	●
ANNIVERSARY OAK 03	●	●	●
ART OAK 03	●	●	●
BERNINI ST			●
BETON CRT			●
BLANCO JZ	●	●	●
BLANCO POLAR AV	●	●	●
BLANCO POLAR DY	●	●	●
BLANCO POLAR MI			●
BLUE FRESCO AV	●	●	●
BLUE FRESCO DY	●	●	●
BLUE FRESCO MI			●
COMO ASH 01	●	●	●
COMO ASH 02	●	●	●
COMO ASH 03			●
CROSS METAL CHAMPAGNE			●
CROSS METAL LIGHT GOLD			●
CROSS METAL TITANIO	●	●	●
CROSS METAL COPPER	●	●	●
ÉVORA 03 JA			●
ÉVORA 04 JA			●
FACTORY 01 CRT	●	●	●
FACTORY 02 CRT	●	●	●
ICE CREAM 01 JA	●	●	●
ICE CREAM 02 JA	●	●	●
ICE CREAM 03 JA			●
ICE CREAM 04 JA			●
ICE LEMON AV			●
ICE LEMON DY			●
ICE LEMON MI			●
LAKELAND 01 SIERRA	●	●	●
LAKELAND 03 SIERRA	●	●	●
MÁRMOL VERSILIA SS			●
NEGRO AV			●
NEGRO DY			●
NEGRO MI			●
NOCCE 01 HO	●	●	●
NOCCE 03 HO	●	●	●
NOGAL ROSALES 01	●	●	●
NOGAL ROSALES 02	●	●	●
NOGAL ROSALES 03	●	●	●
OLMO 01 JZ			●
OLMO 03 JZ			●
ORIENTAL BLACK SS			●
ORIENTAL WHITE SS			●

Directorio de productos  
Product directory

	Pieza Just in Time Just in Time piece	Tablero Just in Time Just in Time panel	Tablero Panel
OSIRIS GRAFITO FE			●
OSIRIS PLATA FE			●
OXID 01 SILVER SS			●
OXID 02 FOREST SS			●
OXID 03 BROWN SS	●	●	●
OXID 04 GRAFIT SS	●	●	●
PAROS AV			●
PAROS DY			●
PICASSO 01 AR	●	●	●
PICASSO 02 AR	●	●	●
PICASSO 03 AR	●	●	●
PORCELAIN 01 GOLD JA	●	●	●
PORCELAIN 02 GOLD JA	●	●	●
PORCELAIN 03 SILVER JA	●	●	●
RASO AV	●	●	●
RASO DY	●	●	●
RASO MI			●
ROBLE MURATTI 01	●	●	●
ROBLE MURATTI 02			●
ROBLE MURATTI 04	●	●	●
ROYAL OLD OAK 02			●
SIENA ST	●	●	●
SIERRA 01 ST			●
SIERRA 02 ST			●
SPATT 01 BLANCO VE	●	●	●
SPATT 05 GRAFITO VE			●
STEELBOARD ALUMINIO GLE			●
STEELBOARD COPPER GLE			●
STEELBOARD GRAFITO GLE			●
TEXTIL GRAFITO TST			●
TEXTIL ORO TST			●
TEXTIL PLATA TST			●
TITÁN 01 PT	●	●	●
TITÁN 02 PT			●
VELÁZQUEZ 01 AR			●
VELÁZQUEZ 02 AR			●
VELÁZQUEZ 03 AR			●
VITAMINE AV	●	●	●
VITAMINE DY	●	●	●
VITAMINE MI	●	●	●
VULCANO AV	●	●	●
VULCANO DY	●	●	●
VULCANO MI	●	●	●
WOODLINE 03 BA	●	●	●
WOODLINE 04 BA			●



Información de  
contactos

*Alvic global contacts  
worldwide*




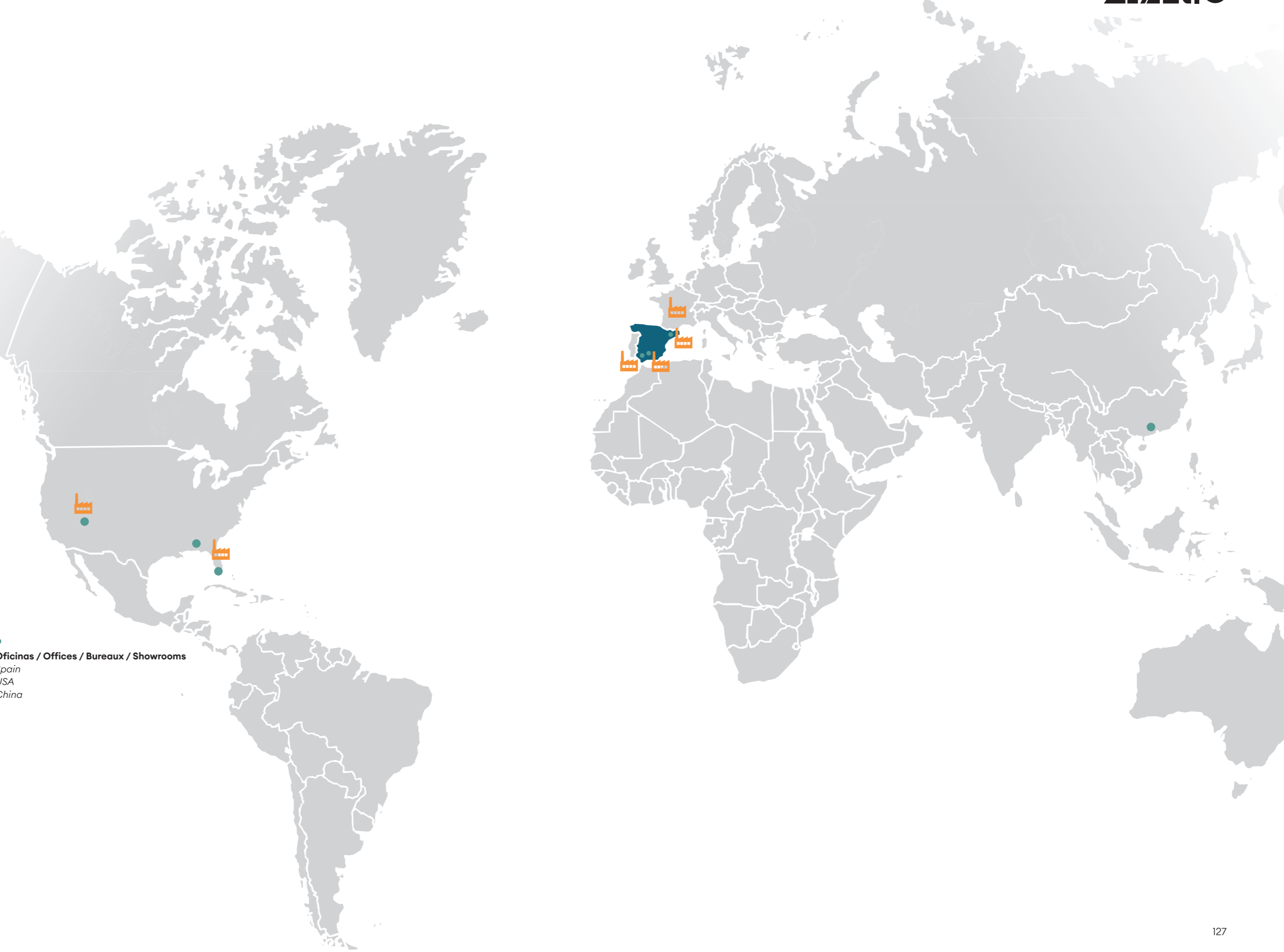
**ALCAUDETE / ALVIC**  
C/ Alcalde Juan Vallejo, 27-29  
23660 Alcaudete, Jaén  
alvic.com  
ventas@grupovalvic.com  
Tel.+34 953 562 002  
Fax. +34 953 561 142

**VIC / OFITRES**  
Carrer del Mas de la Móra, 5,  
08500 Vic, Barcelona  
alvic.com  
pedidosofitres@grupovalvic.com  
Tel.+34 938 89 10 75

**LAKELAND / ALVIC USA**  
525 Recker HWY,  
Auburndale, FL 33823  
customer.service@alvicusa.com  
alvicusa.com

 **Fábricas / Factories / Usines**  
*Alcaudete (Jaén)*  
*La Carolina (Jaén)*  
*Casariche (Sevilla)*  
*VIC (Barcelona)*  
*Solsona (Lérida)*  
*Bozouls (Francia)*  
*Lakeland (Florida)*  
*Las Vegas (Nevada)*

 **Oficinas / Offices / Bureaux / Showrooms**  
*Spain*  
*USA*  
*China*



# Showroom ALVIC

“Hermosilla, 77” Madrid



Los colores de los diseños de paneles representados en este catálogo pueden variar respecto a la muestra física original debido a las técnicas de reproducción gráfica utilizadas en este catálogo.  
*The colors of the panel designs shown in this catalog may differ from the original physical sample due to graphic reproduction techniques used in this catalogue.*



C/ Alcalde Juan Vallejo, 27-29  
23660 Alcaudete (Jaén) España  
Tlfno: +34 953 562 002  
Export Department: +34 953 56 21 34

