

### COMPOSITION



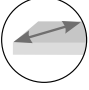
Wood particle base board coated with decorative paper on both sides.

### RECOMMENDED APPLICATIONS

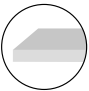
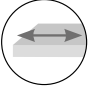
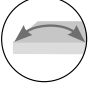
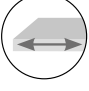



Components for furniture and decoration

### BASE BOARD CHARACTERISTICS

#### Dimensional tolerances

Property	Value	Standard
 Length and width	± 5 mm	EN 324-1
 Thickness	± 0,3 mm	EN 324-1
 Squaring	± 2 mm/m	EN 324-2








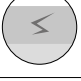


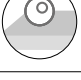

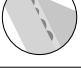

#### Physical & mechanical properties

Property	Thickness (mm)			Standard
	10-12	16-18	19-25	
 Density (kg/m <sup>3</sup> )	710 ± 30	670 ± 30	650 ± 30	EN 323
 Tensile strength (N/mm <sup>2</sup> ) – min.	0,40	0,35	0,30	EN 319
 Flexural strength (N/mm <sup>2</sup> ) – min.	11	11	10	EN 310
 Modulus of elasticity (N/mm <sup>2</sup> ) – min.	1800	1600	1500	EN 310
 Residual moisture (%) – range		5 - 13		EN 322
 Standard formaldehyde content (mg/100g) – max. (CARB-P2 / TSCA-VI available under order)		8 (E1)		EN 120
 Fire behavior (class)		D-s2, d0		EN 13501-1

# SYNCRON TECHNICAL DATA SHEET

## COATING CHARACTERISTICS

### Physical & mechanical properties

Property	SYNCRON	Standard
 Stain resistance	Grade 5	EN 14323: 17
 Resistance to cold liquids	Grade 5	EN 12720:09
 Crack resistance	Grade 5	EN 14323: 17
 Cold check (40 cycles:1h 60 °C,1h -20°C,15' room temp.)	No damage	AIDIMME
 Light fastness	Blue scale: >6 Grey scale: 5	EN 14323: 17
 Dry heat resistance 100 °C	Grade 5	EN 12722:09
 Moist heat resistance 85 °C	Grade 5	EN 12721:09
 Scratch resistance	18 ± 2 N	EN 15186-A
 Abrasion resistance	Class 3A (Pt: 208 cycles)	EN 14323: 17
 Water steam resistance	Grade 5	EN 14323: 17
 Impact stress resistance (large diameter steel ball)	140 cm	EN 14323: 17
 Dimension tolerance (processed edge pieces)	± 0,5 mm	ALVIC
 Antibacterial efficacy (24 hours)	100 %	ASTM E2180:07 JIS Z2801:06
 Warping tolerance	2 mm / 1 m	ALVIC

### Evaluation of surface defects

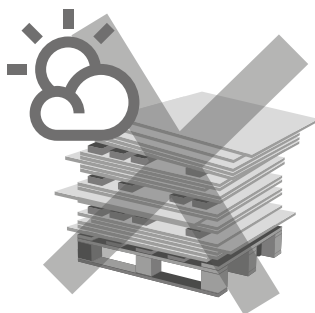
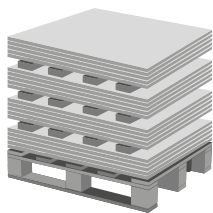
To be visible under the above conditions not be considered admissible defects (bigger than 1 mm<sup>2</sup>) as follows:

1. Viewing distance: 70 cm.
2. Position of workpiece: vertical (installation conditions).
3. Lighting: diffused light of white fluorescent lamps.
4. Observation time: maximum 20 seconds.

### Coated panel thickness

The coatings add 0,30 mm to the base board nominal thickness.

USE RECOMMENDATIONS



**Storage**

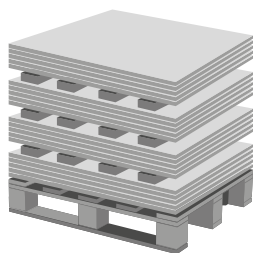
The panels should be checked upon receipt so that any eventual issue can be communicated as soon as possible. Avoid exposure of the product to sunlight (UV radiation) and other sources of heat. Store in a ventilated area. Use a FIFO inventory management system to avoid the mixing of products of very different dates of production, which, with the slight changes in the qualities of coatings, might lead to visible differences between them.

The recommended range of environmental conditions of storage and use is as follows:

Temperature: 10°C - 40°C

Humidity: 30% - 70%

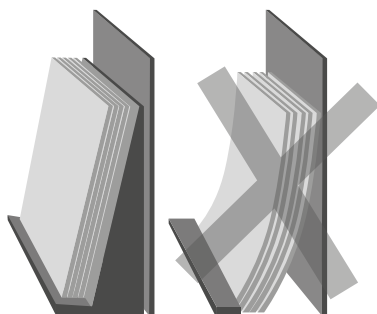
The boards should be checked upon receipt so that any eventual issue can be communicated as soon as possible.



**Horizontal storage**

The panels must not be placed directly on the ground. Whenever possible, the storage support media supplied with each pack should be used and placed in the same position in order to maintain a uniform and level height and to prevent deformation of the boards. For the length of 2750 mm at least 4 supports should be used distributed uniformly.

When stacking multiple packs, up to a recommended maximum of four, the supports of different packs must be aligned vertically in order to transfer the weight to the lower layers without deforming the panels. To protect the surface of the panels, use upper and lower panels protections.



**Vertical storage**

Although it should be avoided whenever possible, a limited number of boards may be stored vertically in racks with a support surface for the panels, so as to prevent warpage, and a minimum inclination of 10°.

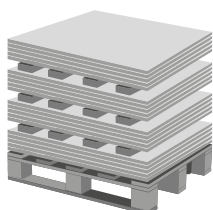


**Handling & transport**

Avoid at all times the negative impact that moisture may have on the panels by preserving the integrity of the shrink wrap protective film until final use. If any previous operations of loading, transport, unloading, etc. have caused the protective film to deteriorate, the pack should be rewrapped as soon as possible. Likewise, cut pieces should also be protected from moisture until they can be edged.

In manual handling of the boards protective gloves and safety shoes must be worn in order to avoid injury. During machining of the panels, appropriate suction systems must be used and, if necessary, protective masks to prevent breathing in of dust generated from the panel.

The panels must not be dragged on any surface that may cause deterioration of any of their faces.



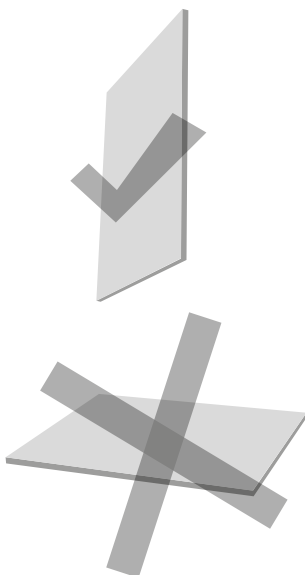
## USE RECOMMENDATIONS



### Cleaning

For cleaning, it is recommended to use a nonabrasive cloth moistened with soap and water and immediate subsequent drying.

Under no circumstances must harsh chemicals be used such as solvents, alcohol, ammonia, etc.



### Applications

The characteristics of the product enable it to be used as non-work surface (vertical surface).

The information contained in this document does not relieve the purchaser, transformer, assembler and/or final user of the obligation to check the compatibility of the material with the planned use and installation.



### Updates

This document may be modified at any time by the company without any express obligation to send any updated edition to all original recipients. To verify that you have the latest edition available, you are advised to contact the customer service department of Alvic Group. aconseja ponerse en contacto con el departamento de atención al cliente de Grupo Alvic.